

Impact of Immunization Strategies on Rubella Incidence During Progress Toward Rubella Control and Elimination — China, 2004–2023

Siyu Liu¹; Xia Xu¹; Qianqian Liu¹; Lin Tang¹; Xiaoqi Wang¹; Aodi Huang¹; JiuHong Li¹; Yuexin Xiu¹; Hong Yang¹; Ning Wen¹; Lance E. Rodewald¹; Zundong Yin¹; Fuzhen Wang^{1,†}

ABSTRACT

Background: Since rubella was incorporated into the national disease surveillance system in 2004, rubella incidence has changed dramatically. This study analyzed the impact of immunization strategies on the age-specific and sex-specific incidence of rubella in China from 2004 to 2023 to inform efforts to accelerate rubella elimination.

Methods: Annual rubella-containing vaccine (RCV) coverage levels, reported rubella cases and incidence, and vaccination status of cases were obtained from the National Immunization Program Information Management System, the National Notifiable Diseases Reporting System, and the Measles Surveillance System, and used to describe temporal trends. Incidence trends and annual percent changes (APC) by age group and sex were estimated using joinpoint regression.

Results: In 2008, RCV coverage was 51.5% for the first dose and 39.0% for the second dose, increasing to and stabilizing at 95% or above for both doses by 2012. There were 584,758 cases of rubella reported in China during 2004–2023. Joinpoint regression showed that rubella incidence initially increased, peaked in 2008, and then decreased ($APC_{2004-2008}=47.12\%$, $APC_{2008-2023}=-18.95\%$, $P<0.05$). Adolescents, aged 10–19 years, accounted for 67.8% of cases at a peak incidence in 2019 ($APC_{2016-2019}=103.70\%$, $APC_{2016-2019}=-89.76\%$, $P<0.05$); 77.8% of cases had no or unknown RCV history.

Conclusions: The decrease in rubella incidence is closely associated with vaccination. Nationwide inclusion of RCV significantly impacted on the prevention and control of rubella. Targeted measures to address immunization gaps and maintain high surveillance sensitivity are necessary to promote rubella elimination.

Rubella is a highly contagious viral illness characterized by fever, rash, and lymphadenopathy, typically occurring among unvaccinated children and young adults (1–2). Clinical manifestations are generally mild and self-limiting; however, infection during pregnancy, especially in the first trimester, can cause fetal infection, resulting in miscarriage, stillbirth, or congenital rubella syndrome (CRS). CRS is characterized by a constellation of malformations, including hearing impairment, congenital heart defects, and eye anomalies (3–4).

In 2004, rubella became a notifiable infectious disease reportable to China's National Notifiable Diseases Reporting System (NNDRS). In 2014, rubella surveillance was integrated into the case-based, laboratory-supported Measles Surveillance System (MSS) (5). As the surveillance system improved, the sensitivity and specificity of rubella detection increased, and surveillance quality indicators were routinely met.

High rubella-containing vaccine (RCV) coverage is essential for eliminating rubella and preventing CRS. RCV was licensed in China in 1993 and introduced nationwide into the Expanded Program on Immunization (EPI) in 2008 in response to the World Health Organization's (WHO) goal of rubella elimination (5). The Western Pacific Regional Committee endorsed the "Regional Strategy and Plan of Action for Measles and Rubella Elimination in the Western Pacific" and urged Member States to eliminate rubella as soon as possible (6). After RCV introduction in China, rubella incidence declined and is now approaching elimination.

Rubella epidemiology over 20 years of surveillance and 16 years of RCV inclusion and vaccination histories of cases were analyzed to estimate rubella incidence and trends, so as to understand the potential drivers of rubella incidence and identify remaining challenges in rubella control and elimination.

METHODS

Data Sources

RCV vaccination data from 2008 to 2021 were obtained from the National Immunization Program Information Management System; rubella case data and incidence reported from 2004 to 2023 were obtained from NNDRS. All cases were confirmed rubella and included laboratory-confirmed, clinically compatible, and epidemiologically linked cases (case definitions are detailed in [Supplementary Table S1](#), available at <https://weekly.chinacdc.cn/>). The vaccination status of cases reported from 2014 to 2023 was obtained from MSS. Demographic data were extracted from the China Information System for Disease Control and Prevention. Data sources covered all 31 provincial-level administrative divisions (PLADs) in China [excluding Hong Kong Special Administrative Region (SAR), Macau SAR, China; and Taiwan, China].

Statistical Analysis

Descriptive statistics were used to describe RCV coverage during 2008–2021, annual incidence during 2004–2023, and the distribution of vaccination status of cases. Joinpoint regression was used to estimate rubella incidence trends by sex and age group during 2004–2023 and to identify segment trends and turning points (7). Age was divided into nine age groups (0–9

years, 10–19, 20–29, ..., 70–79, and ≥ 80 years). Annual percent change (APC), average annual percent change (AAPC), and corresponding 95% confidence intervals (CIs) described incidence trends. AAPC was used to describe trends during the study period; APC was used to describe trends in each segment. Analyses were performed with the Joinpoint Regression Program (version 5.0.2, National Cancer Institute, Bethesda, MD, USA). $P < 0.05$ was considered statistically significant.

RESULTS

Rubella Cases, Incidence, and Routine RCV Coverage

There were 584,758 rubella cases reported during 2004–2023; annual incidences are shown in [Figure 1](#). Rubella incidence was 18.5 per million population in 2004 and increased rapidly, reaching a peak of 91.1 per million population in 2008. From 2009 to 2017, the annual incidence trended downward from 52.6 to 1.2 per million population, although there was a peak of 48.9 per million population in 2011. During a resurgence in 2019, incidence increased to 23.3 per million population, subsequently decreasing to 1.6 per million population in 2020. During 2021–2023, the incidence fell below 1.0 per million population, reaching a historic low of 0.4 per million population in 2023.

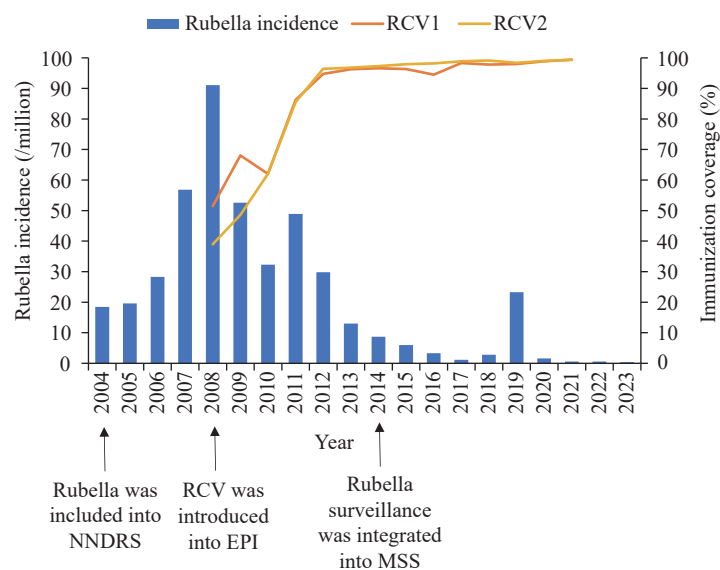


FIGURE 1. Rubella incidence and routine immunization coverage from 2004 to 2023.

Abbreviation: NNDRS=National Notifiable Diseases Reporting System; EPI=Expanded Program on Immunization; MSS=M easles Surveillance System.

RCV was introduced nationwide in 2008. **Figure 1** shows RCV coverage from 2008 to 2021. Coverage was lowest in the first year of RCV inclusion: 51.5% for the first dose and 39.0% for the second dose. The vaccination rate gradually increased in subsequent years. First-dose RCV coverage fluctuated and declined to 62.1% in 2010, from 68.1% in 2009, then gradually increased and remained stable. By 2012, two-dose vaccine coverage stabilized at 95% or greater.

Temporal Trends

Figure 2A shows joinpoint analysis results by sex for 2004–2023. For males, the incidence initially increased, peaked in 2008 ($APC_{2004-2008}=59.52\%$, $P<0.05$), and then decreased ($APC_{2008-2016}=-29.74\%$, $P<0.05$). A subsequent increase and decrease peaked in 2019 ($APC_{2016-2019}=54.28\%$, $P>0.05$; $APC_{2019-2023}=-75.60\%$, $P<0.05$). For females, there was one joinpoint in 2008 ($APC_{2004-2008}=46.45\%$, $P<0.05$; $APC_{2008-2023}=-19.37\%$, $P<0.05$). During the study period, the AAPC showed decreasing trends ($AAPC_{male}=-24.33\%$, $P<0.05$; $AAPC_{female}=-8.58\%$, $P<0.05$).

Figure 2B shows age group analyses. Age group trends were similar to overall trends. Starting in 2004, rubella incidence increased in all age groups but decreased after 2008. There were statistically significant incidence decreases in the 0–9, 10–19, 50–59, 60–69, and 70–79 year age groups during the entire study period, with AAPCs of -16.60% , -33.24% , -6.98% , -5.54% , and -6.79% , respectively. Among all age groups, decreases among 0–9-year-olds and 10–19-year-olds were most prominent. Unlike the monotonic and sustained decline in the 0–9 year age group after 2008 ($APC_{2008-2012}=-15.26\%$; $APC_{2012-2016}=-51.32\%$; $APC_{2016-2023}=-14.89\%$), a peak appeared in 2019 in the 10–19 year age group ($APC_{2008-2016}=-29.82\%$; $APC_{2016-2019}=103.70\%$; $APC_{2019-2023}=-89.16\%$).

For total rubella incidence, there was a statistically significant joinpoint in 2008 ($APC_{2004-2008}=47.12\%$, $P<0.05$; $APC_{2008-2023}=-18.95\%$, $P<0.05$), and AAPC showed decreasing trends ($AAPC=-8.11\%$, $P<0.05$). The APC and AAPC values for each group and each period are shown in **Supplementary Table S2** and **Supplementary Table S3** (available at <https://weekly.chinacdc.cn/>).

Vaccination Status of Cases

Rubella vaccination status was included in the case-

based surveillance system in 2014. As **Figure 3** shows, 75.25% of rubella cases 8 months or older were unvaccinated or had unknown vaccination status; 0.07% had 1 dose; 18.01% had ≥ 2 doses. The percentage of cases with zero or an unknown number of RCV doses was highest in 2014 (84.18%) and lowest in 2022 (53.33%). Among 8-month-to-9-year-olds, the percentage with zero or an unknown number of RCV doses decreased from 74.83% in 2014 to 8.43% in 2023. Among 10-to-19-year-olds and those ≥ 20 years old, zero or unknown RCV dose rates were above 50% and 90%, respectively. The number of rubella cases reported in 2019 was the highest reported in the most recent 10 years, with 10-to-19-year-olds accounting for most (67.3%) of the reported cases that year, and with a 77.8% rate of zero or an unknown number of RCV doses.

DISCUSSION

This study used surveillance data from the 20 years since rubella's inclusion in the NNDRS and the 10 years since its inclusion in the MSS, and vaccination data from the 16 years since nationwide rubella vaccination promotion, to comprehensively assess progress toward rubella control and elimination in China from both epidemiological and immunization strategy perspectives.

After rubella was included in the NNDRS, strengthening the surveillance system and improving its sensitivity led to an initial increase in reported rubella cases. After rubella was subsequently included in the MSS, surveillance sensitivity further improved and met WHO requirements (8). In 2008, China included RCV in the EPI, with the measles-rubella vaccine administered at 8 months and the measles, mumps, and rubella (MMR) vaccine at 18 months (5). Initially, low RCV uptake due to vaccine shortages impeded the decline in rubella incidence, indicating a cumulative susceptible population and a high risk of rubella, likely contributing to a resurgence of cases in 2011. Coverage stabilized above 95% by 2012, and the number of rubella cases decreased markedly, reaching its lowest annual level by 2023. Joinpoint analysis showed that 2008 was an inflection point for incidence in both males and females. Decreases were most pronounced in the 0–9-year-old RCV target population, demonstrating direct vaccine protection. Decreases in non-RCV target age groups demonstrated indirect vaccine protection (9).

It is important to note that while incidence declined

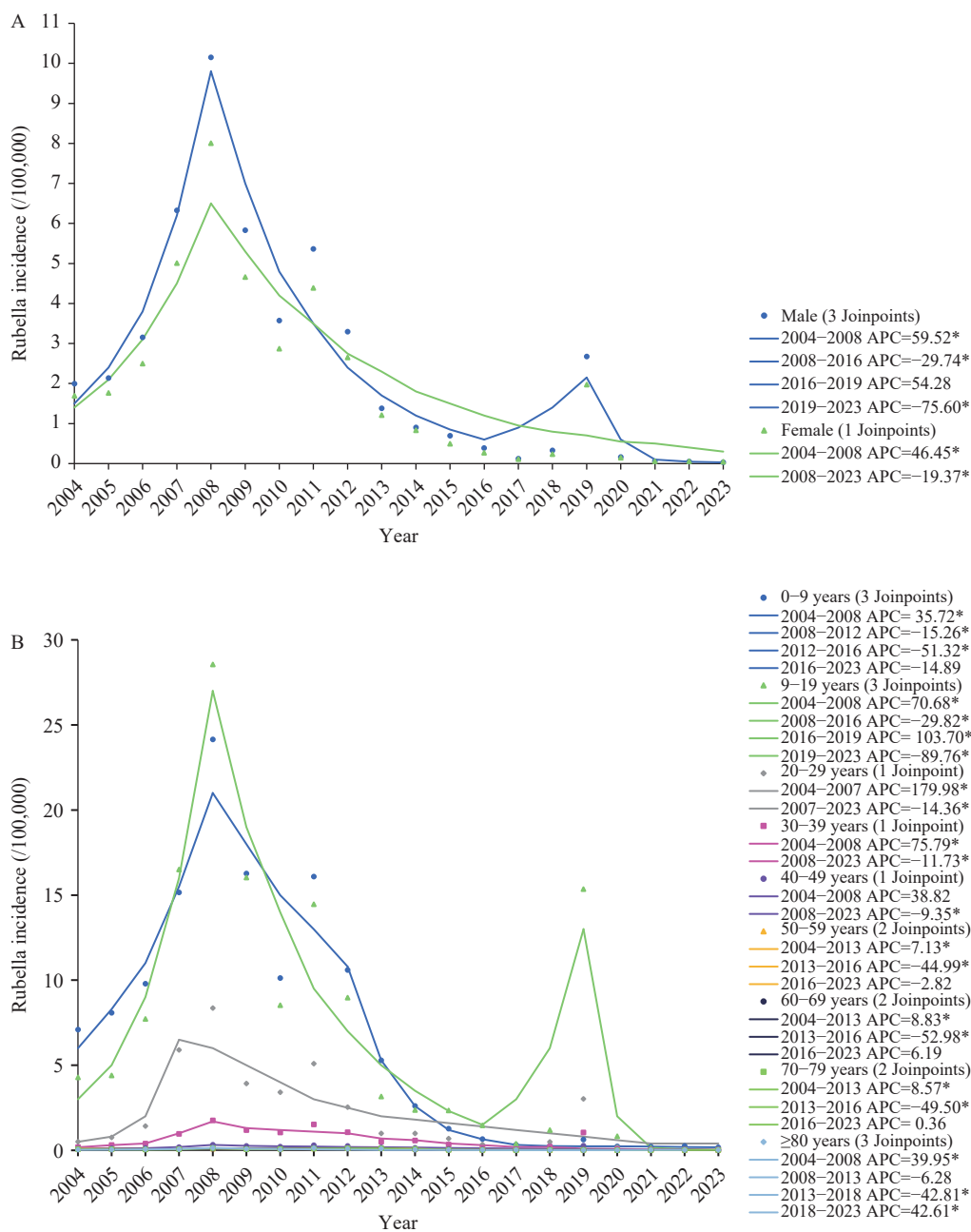


FIGURE 2. Temporal trends of rubella incidence from 2004 to 2023. (A) Temporal trend of rubella incidence by sex; (B) Temporal trend of rubella incidence by age group.

Abbreviation: APC=annual percentage change.

* $P < 0.05$.

after nationwide RCV inclusion, a significant rubella resurgence occurred in 2019. This case increase coincided with a rise in rubella-related public health emergencies. In 2019, 187 public health emergencies were reported nationwide, involving 7,032 cases (10). During 2018–2019, coincident with the resurgence, the rubella virus genotype shifted from lineage 2B-L1 to lineages 1E-L2 and 2B-L2c (11). Joinpoint analysis revealed that incidence increased most among 10–19-

year-olds, with a statistically significant joinpoint in this age group. Analysis of rubella case vaccination status demonstrated that the largest number of 2019 cases occurred among 10–19-year-olds, most of whom had zero or an unknown number of RCV doses. Affected individuals were born before 2008 and lacked protective immunity due to the combination of no RCV vaccination and no rubella exposure, given the low rubella incidence (5). As students, they were active

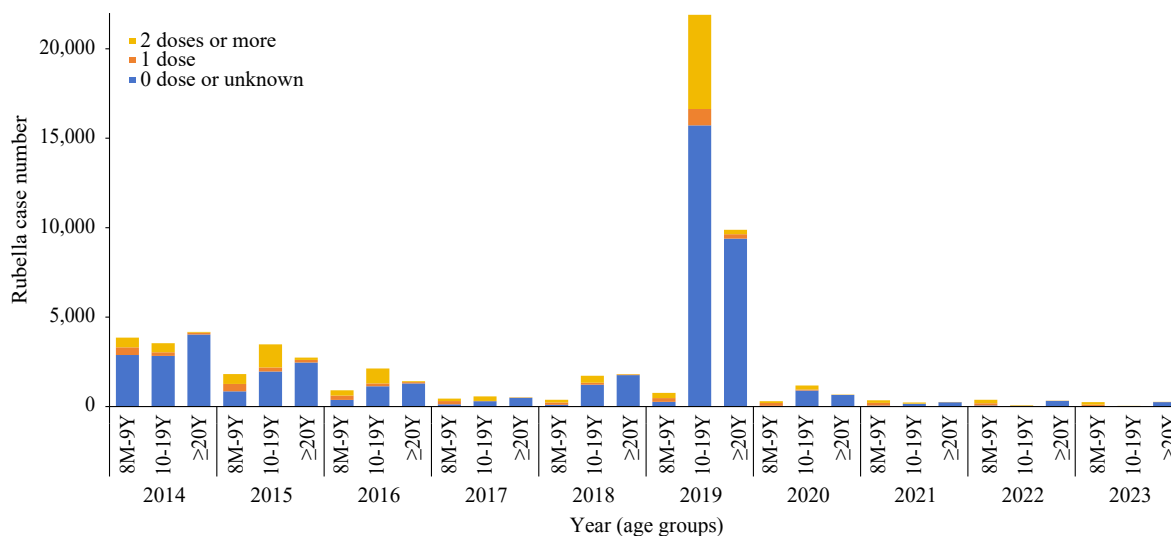


FIGURE 3. Rubella vaccination status of rubella cases from 2014 to 2023.

and in close quarters. This immunity gap may have facilitated a rubella increase spread by both indigenous and imported rubella virus (10,12–13). Concerningly, this age group is entering or has entered reproductive age, posing a risk of CRS (5,14–15).

Eliminating and controlling rubella and preventing CRS depends on high-quality surveillance and effective immunization strategies. Therefore, strengthening sensitive rubella detection (16) and establishing CRS surveillance to augment rubella surveillance is critically important. Meanwhile, promoting vaccination can effectively reduce CRS occurrence (5,17). Rubella vaccination has been comprehensive and effective in China. In addition to maintaining high routine immunization coverage among children, unvaccinated, rubella-susceptible individuals, especially seronegative, non-pregnant young women, are also a key target population. However, jointpoint analysis by sex revealed an inflection point in 2008 for both sexes and another in 2019 for males, suggesting that male cases contributed to rubella transmission. Therefore, emphasizing the importance of rubella and CRS prevention for both women and men is crucial to reducing circulation risk. Vaccination should target the entire population, not just women. PAHO's success in eliminating rubella was based on accelerated campaigns among 5–39-year-olds and follow-up campaigns every four years among 1–4-year-olds. Several countries followed PAHO's lead by conducting supplemental immunization activities (SIAs) in children up to 15 years of age or older. For China, combined with the goal of measles elimination, targeted catch-up MMR vaccination can be conducted in middle schools and

universities to consolidate rubella immunity. However, considering that women of childbearing age are directly associated with CRS occurrence, unvaccinated women of childbearing age should be advised to receive one dose of rubella vaccine at least three months before pregnancy.

This study has limitations. First, detailed analyses of surveillance system quality indicators were not conducted, precluding adjustment for surveillance sensitivity. Second, regional analyses, which could identify consistently high-risk areas requiring intervention, were not performed. Third, the identification and characterization of the immunization gap were based on epidemiological and vaccination data. More conclusive evidence could be obtained by identifying gaps in population immunity through serological surveys.

This study has three fundamental conclusions. First, China's rubella surveillance system gradually improved, and now it detects rubella cases sensitively. Second, rubella vaccination has had a major positive impact on the prevention and control of rubella in China, directly protecting the vaccinated age group and indirectly protecting unvaccinated age groups. Third, the 2019 rubella resurgence exposed an immunity gap among adolescents that warrants close monitoring. Targeted measures should be implemented to address this immunity gap among adolescents and young adults. Targeted catch-up vaccination of susceptible populations and maintaining high surveillance sensitivity are essential to achieve and sustain rubella elimination.

Conflicts of interest: No conflicts of interest.

Funding: Supported by the operation of the public health emergency response mechanism of the Chinese Center for Disease Control and Prevention (No. 102393220020010000017) and the World Health Organization Rubella and Congenital Rubella Syndrome Surveillance Program (No. 601007).

doi: [10.46234/ccdcw2024.262](https://doi.org/10.46234/ccdcw2024.262)

Corresponding author: Fuzhen Wang, wangfz@chinacdc.cn.

¹ National Key Laboratory of Intelligent Tracking and Forecasting for Infectious Diseases (NITFID), National Immunization Programme, Chinese Center for Disease Control and Prevention, Beijing, China.

Submitted: March 19, 2024

Accepted: August 06, 2024

Issued: December 13, 2024

REFERENCES

1. Reef SE, Plotkin SA. Rubella vaccines. In Plotkin SA, Orenstein WA, Offit PA, Edwards KM, editors. *Plotkin's Vaccines*. Amsterdam: Elsevier. 2018; p. 970-1000.e18. <http://dx.doi.org/10.1016/B978-0-323-35761-6.00052-3>.
2. Winter AK, Moss WJ. Rubella. *Lancet* 2022;399(10332):1336 – 46. [https://doi.org/10.1016/S0140-6736\(21\)02691-X](https://doi.org/10.1016/S0140-6736(21)02691-X).
3. Centers for Disease Control and Prevention. 5.1 Congenital Rubella Syndrome (CRS). 2020. <https://www.cdc.gov/ncbddd/birthdefects/surveillancemanual/chapters/chapter-5/chapter5-1.html>. [2023-12-27].
4. Lambert N, Strebel P, Orenstein W, Icenogle J, Poland GA. Rubella. *Lancet* 2015;385(9984):2297 – 307. [https://doi.org/10.1016/S0140-6736\(14\)60539-0](https://doi.org/10.1016/S0140-6736(14)60539-0).
5. Su QR, Feng ZL, Hao LX, Ma C, Hagan JE, Grant GB, et al. Assessing the burden of congenital rubella syndrome in China and evaluating mitigation strategies: a metapopulation modelling study. *Lancet Infect Dis* 2021;21(7):1004 – 13. [https://doi.org/10.1016/S1473-3099\(20\)30475-8](https://doi.org/10.1016/S1473-3099(20)30475-8).
6. WHO Regional Office for the Western Pacific. Regional strategy and plan of action for measles and rubella elimination in the Western Pacific. <https://www.who.int/publications/i/item/9789290618515>. [2023-12-19].
7. Kim HJ, Fay MP, Feuer EJ, Midthune DN. Permutation tests for joinpoint regression with applications to cancer rates. *Statist Med* 2000;19(3):335 – 51. [https://doi.org/10.1002/\(sici\)1097-0258\(20000215\)19:3<335::aid-sim336>3.0.co;2-z](https://doi.org/10.1002/(sici)1097-0258(20000215)19:3<335::aid-sim336>3.0.co;2-z).
8. Ma C, Su QR, Wen N, Fan CX, Yang H, Wang HQ, et al. Evaluation of the measles surveillance system performance in China, 2015-2016. *Chin J Vaccines Immunization* 2018;24(2):141 – 5. <https://doi.org/10.19914/j.cjvi.2018.02.005>.
9. Su QR, Ma C, Wen N, Fan CX, Yang H, Wang HQ, et al. Epidemiological profile and progress toward rubella elimination in China. 10 years after nationwide introduction of rubella vaccine. *Vaccine* 2018;36(16):2079 – 85. <https://doi.org/10.1016/j.vaccine.2018.03.013>.
10. Li YQ, Ma C, Hao LX, Wang FZ, Wen N, Yang H, et al. Epidemiology of rubella in China, 2018-2019. *Chin J Vaccines Immunization* 2021;27(1):62 – 6. <https://doi.org/10.19914/j.cjvi.2021003>.
11. Zhu Z, Cui AL, Zhang Y, Mao NY, Liu Y, Liu L, et al. Transmission dynamics of the rubella virus circulating in China during 2010-2019: 2 lineage switches between genotypes 1E and 2B. *Clin Infect Dis* 2021;73(7):1157 – 64. <https://doi.org/10.1093/cid/ciab339>.
12. Zhu Z, Abernathy E, Cui AL, Zhang Y, Zhou SJ, Zhang ZY, et al. Rubella virus genotypes in the People's Republic of China between 1979 and 2007: a shift in endemic viruses during the 2001 Rubella Epidemic. *J Clin Microbiol* 2010;48(5):1775 – 81. <https://doi.org/10.1128/JCM.02055-09>.
13. Liu Y, Cui AL, Guo JY, Deng LL, Fan LX, Wei H, et al. Epidemiology and genetic characteristics of rubella virus circulating in China in 2020. *Chin J Virol* 2021;37(3):638 – 47. <https://doi.org/10.13242/j.cnki.bingduxuebao.003936>.
14. Zhang LL, Wang XY, Liu MJ, Feng GS, Zeng YP, Wang R, et al. The epidemiology and disease burden of congenital TORCH infections among hospitalized children in China: a national cross-sectional study. *PLoS Negl Trop Dis* 2022;16(10):e0010861. <https://doi.org/10.1371/journal.pntd.0010861>.
15. Zhou QJ, Wang QM, Shen HP, Zhang YP, Zhang SK, Li XT, et al. Rubella virus immunization status in preconception period among Chinese women of reproductive age: a nation-wide, cross-sectional study. *Vaccine* 2017;35(23):3076 – 81. <https://doi.org/10.1016/j.vaccine.2017.04.044>.
16. Durrheim DN, Xu AQ, Baker MG, Hsu LY, Takashima Y. China has the momentum to eliminate measles. *Lancet Reg Health West Pac* 2023;30:100669. <https://doi.org/10.1016/j.lanwpc.2022.100669>.
17. World Health Organization. Rubella vaccines: WHO position paper. *Wkly Epidemiol Rec* 2011;86(29):301-16. <https://pubmed.ncbi.nlm.nih.gov/21766537/>.

SUPPLEMENTARY MATERIALS

SUPPLEMENTARY TABLE S1. Rubella cases classifications.

Classification	Definition
Suspected case	An illness in a patient with fever, rash, cough, catarrhal rhinitis, conjunctivitis, lymphadenopathy, arthritis/arthralgia, or a patient whom a health care worker suspects have measles or rubella.
Laboratory-confirmed rubella case	Suspected cases that meet one of the following criteria: (1) Tested for rubella IgM antibody positive in blood specimen; (2) Rubella virus PCR positive or rubella virus was isolated from the pathogenic specimen; (3) The rubella IgG antibody in the convalescent stage was ≥ 4 times higher than that in the acute stage, or the antibody in the acute stage was negative while in the convalescent stage was positive.
Epidemiologically-linked rubella case	Suspected cases who have no or unqualified specimens but are inked epidemiologically to a laboratory-confirmed case of rubella.
Clinically compatible rubella case	An illness in a patient with fever, rash, cough, catarrhal rhinitis, conjunctivitis, lymphadenopathy, arthritis/arthralgia, or a patient whom a health care worker suspects has rubella, but no specimen or no adequate specimen was taken and the case has not been linked epidemiologically to a laboratory-confirmed case of rubella, and no clear diagnosis of other diseases.

Note: Case definitions refer to the National Measles Surveillance Program (2014 version). The rubella cases in this study included laboratory-confirmed rubella cases, epidemiologically linked rubella cases and clinically compatible rubella cases.

SUPPLEMENTARY TABLE S2. APC and AAPC of rubella incidence by sex from 2004 to 2023 in China.

Sex	Period 1			Period 2			Period 3			Period 4			AAPC	95% CI
	Year	APC	95% CI	Year	APC	95% CI	Year	APC	95% CI	Year	APC	95% CI		
Male	2004–2008	59.52*	(32.83, 113.59)	2008–2016	-29.74*	(-47.55, -24.30)	2016–2019	54.28	(-4.24, 156.15)	2019–2023	-75.60*	(-99.47, -60.38)	-24.33*	(-49.65, -16.04)
Female	2004–2008	46.45*	(11.07, 202.16)	2008–2023	-19.37*	(-33.87, -15.23)							-8.58*	(-19.00, -2.58)

Note: Periods 1, 2, 3 and 4 are time intervals determined by joinpoint analysis.

Abbreviation: APC=annual percent change; AAPC=average annual percent change; CI=confidence interval.

* $P < 0.05$.

SUPPLEMENTARY TABLE S3. APC and AAPC of rubella incidence by age group from 2004 to 2023 in China.

Age group (years)	Period 1			Period 2			Period 3			Period 4			AAPC	95% CI
	Year	APC	95% CI	Year	APC	95% CI	Year	APC	95% CI	Year	APC	95% CI		
0–	2004–2008	35.72*	(23.21, 59.93)	2008–2012	-15.26*	(-24.77, -3.79)	2012–2016	-51.32*	(-67.12, -40.13)	2016–2023	-14.89	(-35.86, 167.50)	-16.60*	(-24.10, -9.70)
10–	2004–2008	70.68*	(43.69, 116.13)	2008–2016	-29.82*	(-43.72, -24.79)	2016–2019	103.70*	(26.28, 188.32)	2019–2023	-89.76*	(-99.91, -78.67)	-33.24*	(-62.99, -22.50)
20–	2004–2007	179.98*	(38.45, 985.18)	2007–2023	-14.36*	(-25.99, -9.91)							3.26	(-10.07, 15.48)
30–	2004–2008	75.79*	(11.65, 461.50)	2008–2023	-11.73*	(-32.00, -6.94)							2.05	(-13.04, 14.69)
40–	2004–2008	38.82	(-5.16, 309.58)	2008–2023	-9.35*	(-80.42, -3.93)							-0.84	(-26.35, 10.73)
50–	2004–2013	7.13*	(2.28, 14.79)	2013–2016	-44.97*	(-55.97, -24.23)	2016–2023	-2.82	(-15.74, 42.87)				-6.98*	(-10.39, -3.51)
60–	2004–2013	8.83*	(5.65, 14.29)	2013–2016	-52.98*	(-62.24, -37.16)	2016–2023	6.19	(-3.75, 35.34)				-5.54*	(-8.28, -3.09)
70–	2004–2013	8.56*	(2.91, 18.36)	2013–2016	-49.50*	(-61.69, -28.52)	2016–2023	-0.36	(-14.46, 81.68)				-6.79*	(-10.85, -3.03)
80–	2004–2008	39.95*	(9.46, 184.19)	2008–2013	-6.28	(-42.16, 8.38)	2013–2018	-42.81*	(-66.84, -12.41)	2018–2023	42.61*	(7.03, 151.51)	0.01	(-4.50, 7.42)
Total	2004–2008	47.12*	(9.37, 213.00)	2008–2023	-18.95*	(-34.95, -14.60)							-8.11*	(-19.44, -1.61)

Note: Periods 1, 2, 3 and 4 are time intervals determined by joinpoint analysis.

Abbreviation: APC=annual percent change; AAPC=average annual percent change; CI=confidence interval.

* $P < 0.05$.