

Preplanned Studies

A Large-Scale Online Survey on Clinical Severity and Associated Risk Factors for SARS-CoV-2 Omicron Infection — China, April–May 2023

Yanxia Sun¹; Yuping Duan¹; Jie Qian¹; Yimin Qu¹; Ye Wang¹; Guohui Fan¹; Qiangru Huang¹; Zhongjie Li¹; Weizhong Yang^{1,†}; Luzhao Feng^{1,‡}

Summary

What is already known about this topic?

Individuals who initially contract severe acute respiratory syndrome coronavirus 2 (SARS-CoV-2) lack significant mixed immunity. Therefore, it is crucial to monitor the clinical characteristics and associated factors of these individuals in order to inform policy-making.

What is added by this report?

The common symptoms reported were fever, cough, and sore throat. Reinfections and receiving four vaccination doses within a 6-month period were found to be associated with a shorter duration of virus shedding, decreased hospitalization rate, and reduced risk of pneumonia. Individuals aged 60 years and older, as well as those with underlying medical conditions, had a higher risk of developing pneumonia.

What are the implications for public health practices?

Online surveys conducted through social media platforms have the potential to complement disease surveillance and data collection efforts. In terms of vaccination prioritization, it is recommended to prioritize older individuals and those with underlying diseases.

According to national surveillance data, there has been a significant increase in new coronavirus disease 2019 (COVID-19) cases in various provincial-level administrative divisions (PLADs) of the Chinese mainland since March 2023, primarily due to the XBB Omicron variant (*1*). This wave of COVID-19 is believed to involve both initial infections and reinfections. Previous studies have mainly focused on individuals with hybrid immunity, but the immunization background of the Chinese population differs from that of other populations. Individuals with initial severe acute respiratory syndrome coronavirus 2

(SARS-CoV-2) infections generally lack significant mixed immunity, which allows for a more accurate assessment of acute symptoms and clinical severity in those infected with prevalent strains. Additionally, several factors, such as underlying diseases and vaccination status, can influence clinical severity (*2–3*). Therefore, it is crucial to monitor the severity of symptoms in both initial COVID-19 infections and reinfections across diverse populations. This study aimed to conduct an online survey to investigate the clinical symptoms and severity in individuals who tested positive for COVID-19 between April 1 and May 30, 2023, in all 31 PLADs in China. The findings of this study will help identify high-risk populations, provide guidance for clinical diagnosis and treatment, and suggest strategies for future epidemic prevention and control.

An observational online survey was conducted on the Sina Weibo platform using a self-designed questionnaire. The survey was conducted between May 23 and May 30, 2023, covering 31 PLADs in China. Each Weibo account holder was allowed to complete the questionnaire only once. The questionnaire consisted of two parts: demographic information and COVID-19-related information. Participants who tested positive for COVID-19 through nucleic acid or antigen testing between April 1 and May 30, 2023, were included in the study. Initial infections were defined as cases with no previous positive COVID-19 test before April 1, while reinfections were cases with one or more positive COVID-19 tests before April 1. Participants who did not have a negative COVID-19 test at the time of completing the questionnaire were excluded from the study.

Categorical variables were presented as counts and proportions (*n*, %). Continuous variables were presented as means ± standard error. Univariate analysis included the chi-square test, Student's *t*-test, Wilcoxon rank sum test, and Kruskal-Wallis test.

Multivariate logistic regression was performed to assess the association between potential influencing factors and disease severity, while adjusting for potential confounding factors. Adjusted odds ratios (ORs) with corresponding 95% confidence intervals (CIs) were calculated. Data cleaning and analyses were conducted using Stata software (version 17.0, Stata Corp; College Station, TX, USA). A significance level of $P < 0.05$ was considered statistically significant.

We analyzed a total of 42,987 participants who initially tested positive for nucleic acid or antigen, but later tested negative and had confirmed results (Supplementary Figure S1, available at <https://weekly.chinacdc.cn/>). Of these participants, 20,798 (48.4%) experienced initial infections, while 22,189 (51.6%) were classified as reinfections (Table 1). The three most prevalent symptoms reported were cough, sore throat, and nasal congestion (Supplementary Table S1, available at <https://weekly.chinacdc.cn/>). Participants reported a median of six symptoms, and the median duration of viral shedding was five days (Supplementary Table S1).

The prevalence of fever (< 39.1 °C), cough, fatigue, and runny nose showed no significant difference between initial infections and reinfections ($P > 0.05$). However, expectoration, headache, muscle and joint pain, changes in taste and smell, fever (≥ 39.1 °C), diarrhea, shortness of breath, nausea, and symptoms categorized under the general, neurological, and gastrointestinal systems had a significantly higher prevalence in initial infections compared to reinfections (all $P < 0.001$). On the other hand, in reinfections, runny nose, nasal congestion, sore throat, and symptoms classified under the respiratory system had a significantly higher prevalence compared to initial infections (all $P < 0.001$) (Supplementary Table S1).

The highest prevalence of fever (≥ 39.1 °C), nasal congestion, and nausea were observed in individuals aged < 18 years. Sore throat and changes in taste and smell were the most common symptoms among adults aged 18–60 years, with shortness of breath being the least common. Among individuals who were reinfected, runny nose was most prevalent among those aged ≥ 70 years, while diarrhea was most prevalent in those aged < 18 years (Figure 1A). Among initial infections, the number of symptoms was highest in individuals aged 18–59 years ($P < 0.001$), while among reinfections, the number of symptoms increased as age decreased ($P < 0.001$) (Figure 1B). The duration of viral shedding was significantly longer in initial infections

compared to reinfections across all age groups ($P < 0.001$) (Figure 1C). We examined symptom severity in 22,189 reinfected participants, and most reported experiencing milder symptoms during the current infection compared to the previous infection (Supplementary Table S2, available at <https://weekly.chinacdc.cn/>).

The rates of healthcare-seeking behaviors, hospitalization, pneumonia, and intensive care unit (ICU) admission were significantly higher in initial infections compared to reinfections (all $P < 0.001$) (Figure 2). Among individuals with initial infections and reinfections, the age group of 0–17 had the highest rate of healthcare-seeking behaviors, while those aged ≥ 70 years had the highest rates of pneumonia and ICU admission (Supplementary Table S3, available at <https://weekly.chinacdc.cn/>).

In multivariate analysis, age and underlying diseases were identified as the primary risk factors for prolonged viral shedding durations, as well as an increased risk of hospitalizations, pneumonia, and ICU admissions. Conversely, vaccination was found to be a protective factor against these variables (Figure 3 and Supplementary Table S4, available at <https://weekly.chinacdc.cn/>).

DISCUSSION

Our study found that among individuals infected with the dominant Omicron variant during the study period in China, the most common acute-phase symptoms were fever, cough, and sore throat. This is not in accordance with a previous meta-analysis (4), which reported that fever, cough, and myalgia were the most prevalent symptoms in initial infections and reinfections. The difference in findings is likely due to the predominance of non-Omicron strains in the studies included in the meta-analysis. In our study, we observed that reinfections had a higher prevalence of upper respiratory symptoms, while initial infections were characterized by a greater presence of general, neurological, and gastrointestinal symptoms. Therefore, it is important to prioritize the management of non-respiratory symptoms in initial infections. Patients with a history of COVID-19, even if they have mild upper respiratory symptoms, should undergo nucleic acid or antigen testing to ensure early detection, diagnosis, isolation, and treatment in order to prevent transmission.

Reinfection was found to be associated with a significant decrease in high fever, hospitalization, ICU

TABLE 1. Sociodemographic information of initial and re-infected COVID-19 cases in China from April 1 to May 30, 2023.

Variables	Total, n (%)	Initial infection, n (%)	Reinfection, n (%)
Total	42,987	20,798 (48.4)	22,189 (51.6)
Regions*			
North	6,456 (15.0)	3,099 (48.0)	3,357 (52.0)
Northeast	1,844 (4.3)	1,020 (55.3)	824 (44.7)
East	14,934 (34.7)	7,317 (49.0)	7,617 (51.0)
South Central	12,640 (29.4)	6,069 (48.0)	6,571 (52.0)
Southwest	5,232 (12.2)	2,410 (46.1)	2,822 (53.9)
Northwest	1,881 (4.4)	883 (46.9)	998 (53.1)
Age group (years)			
0–17	1,488 (3.5)	786 (52.8)	702 (47.2)
18–29	26,221 (61.0)	12,499 (47.7)	13,722 (52.3)
30–39	11,266 (26.2)	5,350 (47.5)	5,916 (52.5)
40–49	2,621 (6.1)	1,278 (48.8)	1,343 (51.2)
50–59	949 (2.2)	582 (61.3)	367 (38.7)
60–69	310 (0.7)	205 (66.1)	105 (33.9)
≥70	132 (0.3)	98 (74.2)	34 (25.8)
Sex			
Female	33,053 (76.9)	15,698 (47.5)	17,355 (52.5)
Male	9,934 (23.1)	5,100 (51.3)	4,834 (48.7)
Underlying diseases	3,084 (7.2)	1,467 (47.6)	1,617 (52.4)
Hypertension	967 (2.3)	496 (51.3)	471 (48.7)
Diabetes	354 (0.8)	192 (54.2)	162 (45.8)
Cardiovascular diseases	381 (0.9)	202 (53.0)	179 (47.0)
Cerebrovascular diseases	82 (0.2)	58 (70.7)	24 (29.3)
Respiratory diseases	734 (1.7)	332 (45.2)	402 (54.8)
Chronic kidney disease	157 (0.4)	80 (51.0)	77 (49.0)
Chronic liver disease	290 (0.7)	150 (51.7)	140 (48.3)
Diseases of immune deficiency	624 (1.5)	262 (42.0)	362 (58.0)
Tumour	53 (0.1)	28 (52.8)	25 (47.2)
Vaccination status			
None	2,194 (5.1)	876 (39.9)	1,318 (60.1)
One dose (>6 months)	580 (1.4)	216 (37.2)	364 (62.8)
One dose (3–6 months)	125 (0.3)	45 (36.0)	80 (64.0)
One dose from (<3 months)	27 (0.1)	13 (48.1)	14 (51.9)
Two doses (>6 months)	7,721 (18)	3,498 (45.3)	4,223 (54.7)
Two doses (3–6 months)	387 (0.9)	209 (54)	178 (46)
Two doses (<3 months)	229 (0.5)	143 (62.4)	86 (37.6)
Three doses (>6 months)	24,560 (57.1)	10,780 (43.9)	13,780 (56.1)
Three doses (3–6 months)	2,252 (5.2)	1,241 (55.1)	1,011 (44.9)
Three doses (<3 months)	1,156 (2.7)	638 (55.2)	518 (44.8)
Four doses and above (>6 months)	333 (0.8)	155 (46.5)	178 (53.5)
Four doses and above (3–6 months)	1,882 (4.4)	1,512 (80.3)	370 (19.7)
Four doses and above (<3 months)	1,541 (3.6)	1,472 (95.5)	69 (4.5)

Note: Initial infections were defined as cases with no history of a positive COVID-19 test before April 1, 2023. Meanwhile, reinfections were defined as cases with one or more positive COVID-19 tests before April 1, 2023.

* North China: Beijing Municipality, Tianjin Municipality, Hebei Province, Shanxi Province; Northeast China: Inner Mongolia Autonomous Region, Liaoning Province, Jilin Province, Heilongjiang Province; East China: Shanghai Municipality, Jiangsu Province, Zhejiang Province, Anhui Province, Fujian Province, Jiangxi Province, Shandong Province; South Central China: Henan Province, Hubei Province, Hunan Province, Guangdong Province, Guangxi Zhuang Autonomous Region, Hainan Province; Southwest China: Chongqing Municipality, Sichuan Province, Guizhou Province, Yunnan Province, Xizang Autonomous Region; Northwest China: Shaanxi Province, Gansu Province, Qinghai Province, Ningxia Hui Autonomous Region, Xinjiang Uygur Autonomous Region; any group with less than three participants was excluded to ensure result robustness. For vaccination status, we included the number of vaccine doses and the duration from the last vaccination, categorized into three stages: <3 months (from January 1 to April 1, 2023), 3–6 months (from October 1, 2022 to January 1, 2023), and >6 months (before October 1, 2022).

Abbreviation: COVID-19=coronavirus disease 2019.

A

	First-time infections							Reinfections							Proportion (%)
	0-17	18-29	30-39	40-49	50-59	60-69	≥70	0-17	18-29	30-39	40-49	50-59	60-69	≥70	
Cough	77.7	73.2	71.6	71.1	72.3	70.7	75.5	75.1	72.4	72.1	70.2	72.8	81.0	64.7	
Sore throat	63.0	74.1	69.0	67.8	64.8	61.5	55.1	73.2	75.4	71.5	66.8	64.9	66.7	38.2	
Nasal congestion	65.8	70.3	62.6	54.1	46.4	36.6	41.8	75.9	71.1	63.7	54.5	52.9	43.8	35.3	
Runny nose	61.6	63.2	53.8	45.5	42.8	42.4	39.8	76.6	74.1	66.0	59.1	52.9	56.2	47.1	
Fatigue	59.4	66.3	67.3	65.8	70.3	76.1	77.6	59.5	57.1	53.9	49.4	58.9	49.5	58.8	
Headache	64.0	62.9	58.3	52.7	54.1	44.4	52.0	65.8	53.3	47.6	40.6	41.4	31.4	29.4	
Fever (<39.1 °C)	38.9	51.3	52.7	58.3	64.6	67.3	59.2	58.8	54.3	50.8	46.9	52.3	52.4	50.0	
Sputum	49.7	60.5	56.4	54.6	46.7	51.7	58.2	44.0	41.0	40.0	35.6	37.6	39.0	50.0	
Muscle and joint pain	38.9	46.7	55.2	57.9	57.6	52.2	44.9	38.9	32.2	34.5	34.2	36.8	26.7	35.3	
Changes in taste and smell	32.6	50.6	52.5	47.7	36.9	30.2	18.4	22.9	23.2	21.6	19.2	16.3	8.6	8.8	
Fever (≥39.1 °C)	53.4	39.6	36.3	29.3	22.7	18.0	22.4	17.9	8.7	6.8	5.4	6.3	6.7	5.9	
Diarrhoea	20.2	19.9	20.7	19.0	17.5	16.6	19.4	18.5	16.1	15.9	11.8	7.9	7.6	8.8	
Dyspnea and shortness of breath	14.8	16.0	18.2	15.3	17.7	13.2	25.5	16.2	12.8	12.7	11.7	11.4	6.7	14.7	
Vomiting	17.7	11.5	9.6	7.3	7.4	3.9	10.2	10.5	6.5	4.5	3.2	1.6	0.0	2.9	

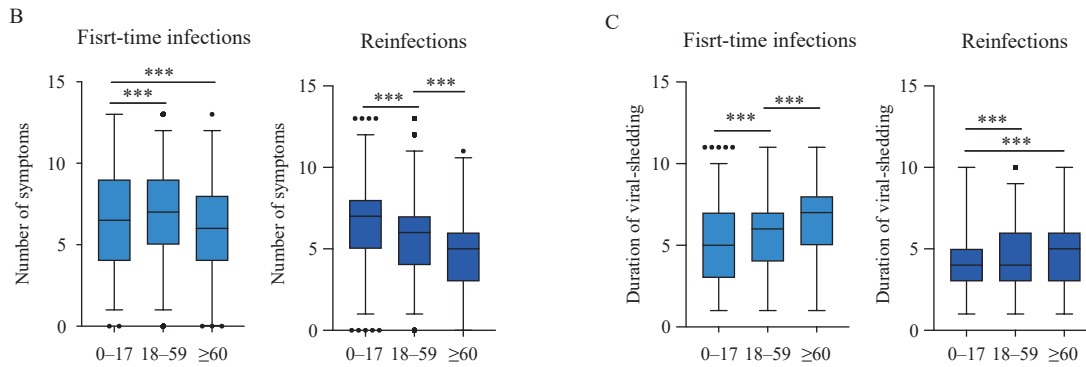


FIGURE 1. Comparison of clinical manifestations, number of symptoms, and viral shedding durations between an initial and a re-infected COVID-19 cases in China from April 1 to May 30, 2023. (A) The clinical manifestations of COVID-19 among initial and re-infected cases, categorized by age group. (B) The number of symptoms among initial and re-infected cases, categorized by age group. (C) The duration of viral shedding among initial and re-infected cases, categorized by age group. Note: The percentages in the boxes in panel A indicate the proportion of each symptom within different age groups. The duration of viral shedding was defined as the period between the initial positive test and the first negative test post-infection. The light blue box plot represents initial infections, while the dark blue box plot represents reinfections. The upper line of the box plot represents the third quartile plus 1.5 times the interquartile range, and the lower line represents the first quartile minus 1.5 times the interquartile range.

*** $P < 0.001$.

Abbreviation: COVID-19=coronavirus disease 2019.

admission, and pneumonia. Additionally, it was observed that the number of symptoms and duration of viral shedding were negatively correlated with reinfection. Notably, individuals who had experienced reinfection exhibited lower levels of healthcare-seeking behavior. In line with previous studies, primary infection provided protection against reinfection and contributed to decreased severity of illness (5). In our study, reinfection reduced the risk of hospitalization, ICU admission, and pneumonia by 42%, 89%, and 49%, respectively. This indicates reduced severe illness risk with Omicron reinfection across all age groups, while reduced clinical severity may discourage healthcare-seeking behaviors.

In our study, we found that older age is associated with higher rates of hospitalization, pneumonia, ICU

admission, and prolonged viral shedding durations. A previous study has also shown that reinfection in elderly patients increases the risk of mortality, hospitalization, and long-term effects (6). Another observational study conducted in China found that patients aged ≥ 60 years had longer disease courses and higher rates of respiratory failure compared to younger patients (7). These findings suggest that the elderly population remains highly vulnerable to Omicron variant infections, emphasizing the importance of proactive healthcare-seeking behavior. Additionally, our results indicate that middle-aged individuals have an increased risk of hospitalization and pneumonia. Therefore, we recommend performing chest imaging in patients with typical COVID-19 symptoms, such as cough, shortness of breath, and chest pain, to detect

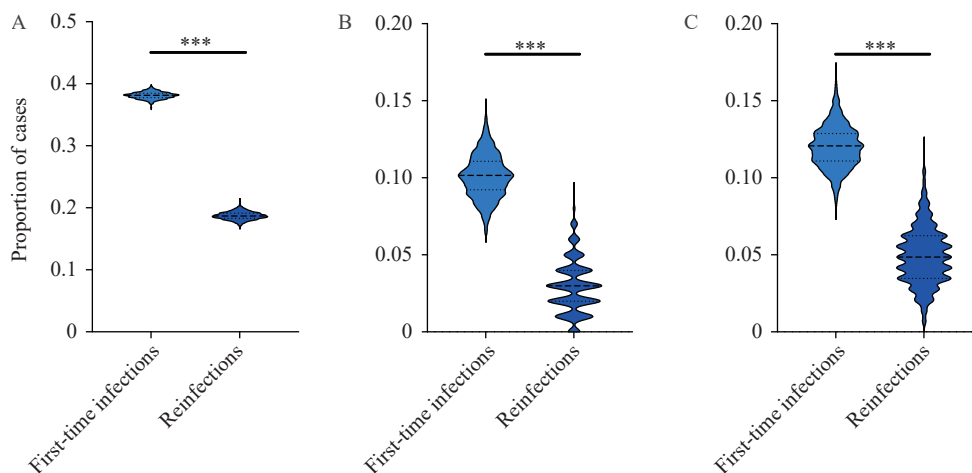


FIGURE 2. Comparison of (A) healthcare-seeking behaviors, (B) hospitalization status, and (C) occurrence of pneumonia between initial and re-infected COVID-19 cases in China from April 1 to May 30, 2023.

Note: The total number of participants (42,987) served as the denominator for calculating the prevalence of healthcare-seeking status. The prevalence of hospitalization and pneumonia was calculated using the denominator of the healthcare-seeking group (11,759). Further, the prevalence of ICU admission was determined using the denominator of participants who were hospitalized (425). The data from different age groups were combined to accurately characterize the different populations, and overall proportions were calculated using 1,000 simulations.

*** for $P < 0.001$.

Abbreviation: COVID-19=coronavirus disease 2019.

early lung damage and improve outcomes.

Pre-existing underlying diseases have been shown to significantly increase the risk of hospitalization, ICU admission, and pneumonia, consistent with a prospective cohort study that demonstrated the association between comorbidity and hospitalization due to COVID-19 (8). This increased risk can be attributed to compromised immune function and a pro-inflammatory state (9). Our study found that diabetes, cerebrovascular disease, and immunodeficiency disorders increased the risk of hospitalization, while cardiovascular disease increased the risk of ICU admission. These findings underscore the susceptibility of individuals with specific underlying diseases to severe clinical symptoms from SARS-CoV-2 infections, highlighting the need for special clinical attention. Additionally, co-infections with multiple pathogens may potentially impact the assessment of SARS-CoV-2 severity. Timely and comprehensive data on the changing characteristics of respiratory infections are crucial to complement the existing respiratory surveillance mechanisms in the Chinese mainland. Understanding the evolving epidemiological characteristics of respiratory pathogens is essential for implementing measures to mitigate the risk of respiratory diseases. Future studies should collect data on co-infections with multiple respiratory

pathogens to accurately analyze these confounding factors.

Our findings demonstrate that vaccination effectively reduces hospitalization, admission to the ICU, and pneumonia in cases of Omicron variant infection. A systematic review revealed that hybrid immunity was 97.4% effective against hospitalization or severe disease 12 months after the primary vaccine series, and 95.3% effective 6 months after the first booster vaccine following the most recent infection or vaccination (10). In terms of magnitude and durability of protection, individuals with hybrid immunity experienced significantly higher levels of protection compared to those with previous infection alone. This emphasizes the importance of vaccination in safeguarding against severe Omicron variant-related illness, even in individuals who have had a previous infection (10).

In our study, only 73.79% of participants completed the primary vaccine series, with 57.13% receiving their last vaccination more than 6 months prior to completing the questionnaire. To maintain effective immunization coverage, interventions are needed to promote timely vaccine uptake among priority populations.

This study has several limitations. First, the ratio of symptomatic to asymptomatic patients may not

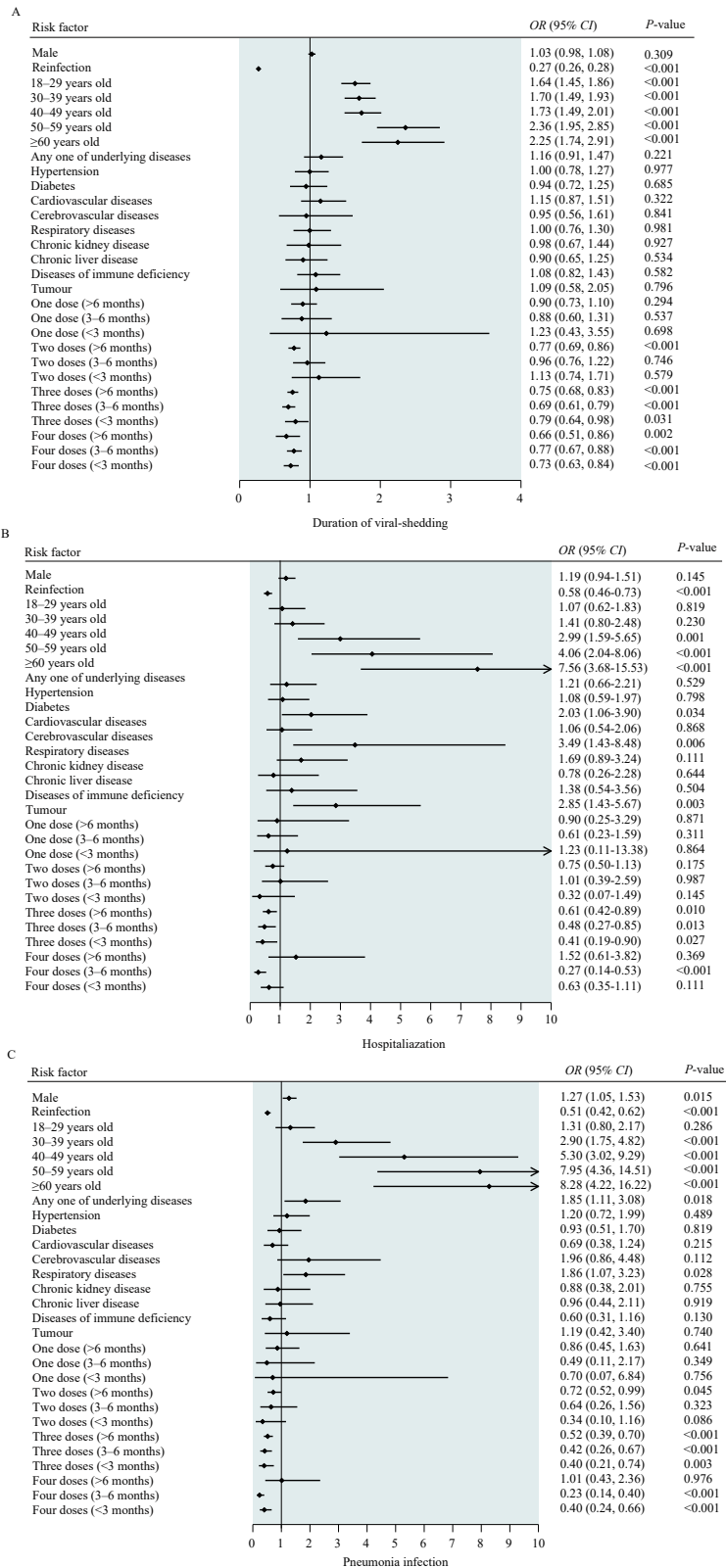


FIGURE 3. Risk factors associated with clinical severity in the Chinese mainland from April 1 to May 30, 2023. Note: Participants were divided into two groups based on the median viral shedding duration. The factors taken into consideration were regions, age, sex, infection history, underlying diseases, and SARS-CoV-2 vaccination status. Additional factors were adjusted in the regression models as confounding variables for each assessed factor. Abbreviation: OR=odds ratios; CI=confidence intervals.

accurately represent real-world conditions due to potential selection bias among participants who completed the online questionnaire, as they are more likely to have symptoms. Secondly, there may have been errors in recall accuracy, leading to underestimation or overestimation of certain factors. Lastly, the use of online social media-based surveys can introduce user and selection bias. To address this, we allowed co-habitants to participate in the survey. However, given that most participants were under 40 years of age, we conducted a stratified analysis based on different age groups and included age as a confounding factor in the multivariate analysis.

Conflict of interest: No conflicts of interest.

Acknowledgements: This study collected data based on an online questionnaire on Sina Weibo, thank all the participants who contributed to the study by collecting and sharing data.

Funding: Supported by the CAMS Innovation Fund for Medical Sciences (2021-I2M-1-044), the Beijing Natural Science Foundation (L222028), and the Special Funds for the Basic Research and Development Program in the Central Non-profit Research Institutes of China (2021-RC330-002).

doi: [10.46234/ccdcw2024.059](https://doi.org/10.46234/ccdcw2024.059)

Corresponding authors: Luzhao Feng, fengluzhao@cams.cn; Weizhong Yang, yangweizhong@cams.cn.

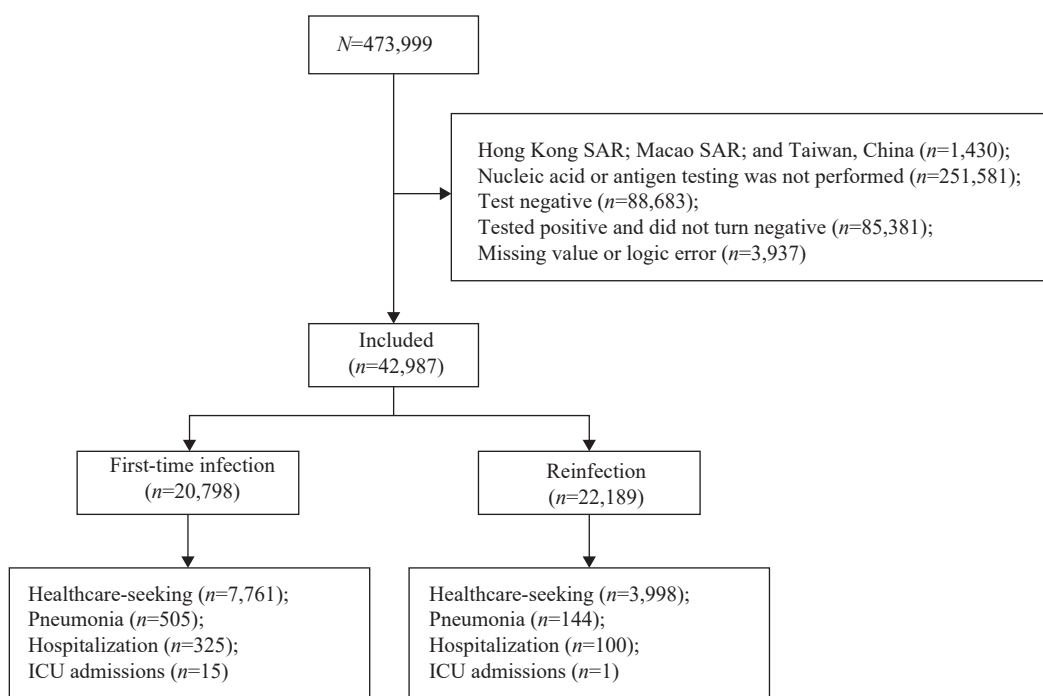
¹ State Key Laboratory of Respiratory Health and Multimorbidity, Key Laboratory of Pathogen Infection Prevention and Control, Ministry of Education, School of Population Medicine and Public Health, Chinese Academy of Medical Science & Peking Union Medical College, Beijing, China.

Submitted: November 13, 2023; Accepted: March 10, 2024

REFERENCES

1. Chinese Center for Disease Control and Prevention. National situation of novel coronavirus infection. 2023. https://www.chinacdc.cn/jkzt/crb/zl/szkb_11803/jssl_13141/202304/t20230401_264798.html. [2023-6-11]. (In Chinese).
2. Sheikh A, Kerr S, Woolhouse M, McMenamin J, Robertson C, EAVE II Collaborators. Severity of omicron variant of concern and effectiveness of vaccine boosters against symptomatic disease in Scotland (EAVE II): a national cohort study with nested test-negative design. *Lancet Infect Dis* 2022;22(7):959 – 66. [https://doi.org/10.1016/S1473-3099\(22\)00141-4](https://doi.org/10.1016/S1473-3099(22)00141-4).
3. Klein EY, Fall A, Norton JM, Eldesouki RE, Abdullah O, Han LJ, et al. Severity outcomes associated with SARS-CoV-2 XBB variants, an observational analysis. *J Clin Virol* 2023;165:105500. <https://doi.org/10.1016/j.jcv.2023.105500>.
4. Nguyen NN, Nguyen YN, Hoang VT, Million M, Gautret P. SARS-CoV-2 reinfection and severity of the disease: a systematic review and meta-analysis. *Viruses* 2023;15(4):967. <https://doi.org/10.3390/v15040967>.
5. COVID-19 Forecasting Team. Past SARS-CoV-2 infection protection against re-infection: a systematic review and meta-analysis. *Lancet* 2023;401(10379):833 – 42. [https://doi.org/10.1016/S0140-6736\(22\)02465-5](https://doi.org/10.1016/S0140-6736(22)02465-5).
6. Bowe B, Xie Y, Al-Aly Z. Acute and postacute sequelae associated with SARS-CoV-2 reinfection. *Nat Med* 2022;28(11):2398 – 405. <https://doi.org/10.1038/s41591-022-02051-3>.
7. Liu Y, Mao B, Liang S, Yang JW, Lu HW, Chai YH, et al. Association between age and clinical characteristics and outcomes of COVID-19. *Eur Respir J* 2020;55(5):2001112. <https://doi.org/10.1183/13993003.01112-2020>.
8. Al-Numair NS, Alyounes B, Al-Saud H, Halwani R, Al-Muhsen S. Clinical characteristics, risk factors, and rate of severity of a nationwide COVID-19 Saudi cohort. *Saudi J Biol Sci* 2022;29(7):103315. <https://doi.org/10.1016/j.sjbs.2022.103315>.
9. Zhang JJ, Dong X, Liu GH, Gao YD. Risk and protective factors for COVID-19 morbidity, severity, and mortality. *Clin Rev Allergy Immunol* 2023;64(1):90 – 107. <https://doi.org/10.1007/s12016-022-08921-5>.
10. Bobrovitz N, Ware H, Ma XM, Li ZH, Hosseini R, Cao C, et al. Protective effectiveness of previous SARS-CoV-2 infection and hybrid immunity against the omicron variant and severe disease: a systematic review and meta-regression. *Lancet Infect Dis* 2023;23(5):556 – 67. [https://doi.org/10.1016/S1473-3099\(22\)00801-5](https://doi.org/10.1016/S1473-3099(22)00801-5).

SUPPLEMENTARY MATERIAL



SUPPLEMENTARY FIGURE S1. Flow chart for participant inclusion.
Abbreviation: ICU=intensive care unit; SAR=special administrative region.

SUPPLEMENTARY TABLE S1. Comparison of clinical manifestations between initial and re-infected participants with COVID-19 in China, from April 1 to May 30, 2023.

Clinical Manifestations	Total, <i>n</i> (%)	Initial infection, <i>n</i> (%)	Reinfection, <i>n</i> (%)	<i>P</i> -value
Total	42,987	20,798	22,189	
Fever ($\geq 39.1^\circ\text{C}$)	9,700 (22.6)	7,871 (37.8)	1,829 (8.2)	<0.001
Fever ($< 39.1^\circ\text{C}$)	22,616 (52.6)	10,852 (52.2)	11,764 (53.0)	0.082
Headache	23,945 (55.7)	12,614 (60.7)	11,331 (51.1)	<0.001
Muscle and joint pain	17,694 (41.2)	10,326 (49.7)	7,368 (33.2)	<0.001
Sore throat	31,179 (72.5)	14,866 (71.5)	16,313 (73.5)	<0.001
Nasal congestion	28,781 (67.0)	13,737 (66.1)	15,044 (67.8)	<0.001
Runny nose	27,892 (64.9)	12,215 (58.7)	15,677 (70.7)	<0.001
Cough	31,185 (72.6)	15,137 (72.8)	16,048 (72.3)	0.289
Sputum	21,083 (49.1)	12,112 (58.2)	8,971 (40.4)	<0.001
Changes in taste and smell	15,243 (35.5)	10,297 (49.5)	4,946 (22.3)	<0.001
Diarrhoea	7,638 (17.8)	4,151 (20.0)	3,487 (15.7)	<0.001
Nausea	3,525 (8.2)	2,249 (10.8)	1,276 (5.8)	<0.001
Shortness of breath	6,283 (14.6)	3,447 (16.6)	2,836 (12.8)	<0.001
Fatigue	26,233 (61.0)	13,837 (66.5)	12,396 (55.9)	<0.001
General system	32,316 (75.2)	18,723 (90.0)	13,593 (61.3)	<0.001
Neurological system	35,788 (83.3)	18,566 (89.3)	17,222 (77.6)	<0.001
Respiratory system	42,185 (98.1)	20,330 (97.8)	21,855 (98.5)	<0.001
Gastrointestinal system	32,316 (75.2)	18,723 (90.0)	13,593 (61.3)	<0.001
Number of symptoms [median (IQR)]	6 (4.0)	7 (4.0)	6 (4.0)	<0.001
Duration of disease [median (IQR)]	5 (3.0)	6 (3.0)	4 (3.0)	<0.001

Note: The statistical tests used in the study were as follows: For categorical data, chi-square test was employed; for quantitative data, two independent t-test was used; for skewed distribution data, Wilcoxon rank sum test was applied. The symptoms associated with COVID-19 involve various bodily systems. These include the general system, which exhibits symptoms of fever. The neurological system is also impacted, leading to symptoms such as headache, muscle and joint pain, fatigue, and changes in taste and smell. The respiratory system is affected and can present symptoms like sore throat, nasal congestion, runny nose, cough, sputum, and shortness of breath. Additionally, the gastrointestinal system may be affected, causing symptoms such as diarrhea and nausea. COVID-19 refers to coronavirus disease, and IQR stands for interquartile range.

Abbreviation: COVID-19=coronavirus disease 2019; IQR=interquartile range.

SUPPLEMENTARY TABLE S2. The preservation of the severity of symptoms between the latest infection and the previous infection.

Manifestation	Milder than the previous infection, <i>n</i> (%)	Similarity, <i>n</i> (%)	More severe than the previous infection, <i>n</i> (%)
Fever	18,251 (82.3)	2,409 (10.9)	1,529 (6.9)
Fatigue	16,107 (72.6)	4,360 (19.7)	1,722 (7.8)
Headache	14,809 (66.7)	4,582 (20.7)	2,798 (12.6)
Muscle and joint pain	15,326 (69.1)	4,486 (20.2)	2,377 (10.7)
Sore throat	13,984 (63.0)	4,398 (19.8)	3,807 (17.2)
Nasal congestion	13,106 (59.1)	5,328 (24.0)	3,755 (16.9)
Runny nose	12,690 (57.2)	5,298 (23.9)	4,201 (18.9)
Cough	15,002 (67.6)	3,993 (18.0)	3,194 (14.4)
Expectoration	14,584 (65.7)	4,670 (21.1)	2,935 (13.2)
Changes in taste and smell	12,053 (54.3)	6,806 (30.7)	3,330 (15.0)
Diarrhea	9,634 (43.4)	7,853 (35.4)	4,702 (21.2)
Vomit	9,829 (44.3)	8,643 (39.0)	3,717 (16.8)
Dyspnea and shortness of breath	10,912 (49.2)	7,777 (35.1)	3,500 (15.8)

SUPPLEMENTARY TABLE S3. Comparison of healthcare-seeking behaviors, hospitalization status, and incidence of pneumonia among individuals between initial and re-infected cases in different age groups in China, from April 1 to May 30, 2023.

Variables	Initial infection, % (95% CI)	Reinfection, % (95% CI)
Number of participants	20,798	22,189
Healthcare-seeking		
0–17 years old	42.4 (42.22, 42.57)	31.6 (31.44, 31.83)
18–29 years old	41.1 (41.01, 41.09)	19.4 (19.36, 19.45)
30–39 years old	31.8 (31.78, 31.92)	14.7 (14.66, 14.81)
40–49 years old	24.4 (24.24, 24.53)	11.6 (11.42, 11.73)
50–59 years old	28.5 (28.33, 28.76)	14.4 (14.11, 14.70)
60–69 years old	31.7 (31.36, 32.10)	19.6 (19.07, 20.14)
≥70 years old	41.0 (40.59, 41.47)	26.7 (25.73, 27.62)
Number of participants	7,761	3,998
Hospitalization		
0–17 years old	3.4 (3.11, 3.74)	1.9 (1.45, 2.30)
18–29 years old	2.8 (2.70, 2.86)	2.3 (2.16, 2.39)
30–39 years old	4.4 (4.26, 4.55)	2.1 (1.95, 2.32)
40–49 years old	9.1 (8.81, 9.48)	4.7 (4.23, 5.19)
50–59 years old	16.0 (15.60, 16.48)	3.9 (3.06, 4.74)
60–69 years old	12.6 (11.86, 13.34)	15.0 (13.66, 16.34)
≥70 years old	58.7 (58.10, 59.23)	11.9 (9.88, 13.91)
Pneumonia		
0–17 years old	4.4 (4.03, 4.71)	1.8 (1.36, 2.19)
18–29 years old	3.7 (3.64, 3.80)	2.8 (2.72, 2.95)
30–39 years old	9.5 (9.36, 9.65)	4.6 (4.43, 4.85)
40–49 years old	16.81 (16.51, 17.12)	6.4 (5.92, 6.88)
50–59 years old	28.2 (27.82, 28.63)	15.2 (14.34, 15.96)
60–69 years old	20.9 (20.21, 21.61)	19.4 (18.15, 20.60)
≥70 years old	50.3 (49.65, 50.87)	22.9 (21.06, 24.74)
Number of participants	325	100
ICU admissions		
0–17 years old	7.8 (6.14, 9.46)	0
18–29 years old	4.3 (3.78, 4.82)	1.3 (0.60, 2.00)
30–39 years old	1.7 (0.90, 2.50)	0
40–49 years old	0	0
50–59 years old	7.0 (5.90, 8.10)	0
60–69 years old	0	0
≥70 years old	16.9 (15.87, 18.01)	0

Abbreviation: ICU=intensive care unit; CI=confidence intervals.

SUPPLEMENTARY TABLE S4. Risk factors for ICU admission.

Variables	Number, <i>n</i> (%)	OR, 95% CI	P-value
Male	6 (37.5)	1.34 (0.41, 4.36)	0.624
Reinfection	1 (6.3)	0.11 (0.01, 0.95)	0.045
18–29 years old	7 (43.8)	0.62 (0.07, 5.96)	0.683
30–39 years old	1 (6.3)	0.2 (0.01, 3.56)	0.275
40–49 years old	0 (0)	–	–
50–59 years old	2 (12.5)	3.53 (0.24, 51.53)	0.356
≥60 years old	5 (31.3)	3.63 (0.23, 56.28)	0.357
Underlying disease	8 (50.0)	0.6 (0.06, 5.62)	0.651
Hypertension	4 (25.0)	0.76 (0.09, 6.44)	0.8
Diabetes	2 (12.5)	2.48 (0.28, 22.03)	0.414
Cardiovascular diseases	5 (31.3)	15.94 (2.00, 126.89)	0.009
Cerebrovascular diseases	1 (6.3)	0.22 (0.01, 5.1)	0.348
Respiratory diseases	4 (25.0)	4.04 (0.73, 22.27)	0.109
Chronic kidney disease	1 (6.3)	1.67 (0.12, 23.68)	0.705
Chronic liver disease	0 (0)	–	–
Diseases of immune deficiency	2 (12.5)	6.19 (0.70, 54.97)	0.102
Tumor	0 (0)	–	–
One dose vaccine	1 (6.3)	1.05 (0.10, 11.15)	0.965
Two dose vaccines	2 (12.5)	0.12 (0.02, 0.74)	0.022
Three dose vaccines	63 (7.5)	0.15 (0.04, 0.60)	0.007
≥ Four dose vaccines	1 (6.3)	0.09 (0.01, 0.91)	0.042

Note: “–” means the sample size in this group is 0, so the OR value cannot be calculated.

Abbreviation: OR=odds ratio; CI=confidence interval; ICU=intensive care unit.