

Methods and Applications

Feasibility of Booster Vaccination in High-Risk Populations for Controlling Coronavirus Variants — China, 2021

Kangguo Li¹; Zeyu Zhao^{1,2}; Hongjie Wei¹; Jia Rui¹; Jiefeng Huang¹; Xiaohao Guo¹; Yichao Guo¹; Shiting Yang¹; Guzainuer Abudurusuli¹; Li Luo¹; Xingchun Liu¹; Yao Wang¹; Jingwen Xu¹; Yuanzhao Zhu¹; Meng Yang¹; Tianlong Yang¹; Weikang Liu¹; Bin Deng¹; Chan Liu¹; Zhuoyang Li¹; Peihua Li¹; Shanshan Yu¹; Zimei Yang¹; Yanhua Su¹; Benhua Zhao¹; Yan Niu^{3,*}; Tianmu Chen^{1,#}

ABSTRACT

Introduction: Vaccination booster shots are completely necessary for controlling breakthrough infections of severe acute respiratory syndrome coronavirus 2 (SARS-CoV-2) in China. The study aims to estimate effectiveness of booster vaccines for high-risk populations (HRPs).

Methods: A vaccinated Susceptible-Exposed-Symptomatic-Asymptomatic-Recovered/Removed (SEIAR) model was developed to simulate scenarios of effective reproduction number (R_{eff}) from 4 to 6. Total number of infectious and asymptomatic cases were used to evaluate vaccination effectiveness.

Results: Our model showed that we could not prevent outbreaks when covering 80% of HRPs with booster unless $R_{eff}=4.0$ or the booster vaccine had efficacy against infectivity and susceptibility of more than 90%. The results were consistent when the outcome index was confirmed cases or asymptomatic cases.

Conclusions: An ideal coronavirus disease 2019 (COVID-19) booster vaccination strategy for HRPs would be expected to reach the initial goal to control the transmission of the Delta variant in China. Accordingly, the recommendation for the COVID-19 booster vaccine should be implemented in HRPs who are already vaccinated and could prevent transmission to other groups.

INTRODUCTION

Currently, countries with sufficient vaccine supply, such as Israel, are working towards a policy to promote booster vaccination. Israel began offering booster vaccines to the elderly on July 30, 2021 and offered these booster shots to the rest of the population starting on October 3, 2021 (1). The United States, Spain, Britain, China, and other countries have also

reported planning to implement booster vaccinations.

One study of fully vaccinated over 60-year-olds in Israel found the rate of confirmed infection was lower in booster groups than in the two dose groups after 12 days, relative ratio: 11.3 (95% CI: 10.4–12.3) (2). China has administered more than 2.2 billion doses of COVID-19 vaccines as of October 6, 2021 (3), but still has a high risk of being attacked by variants of SARS-CoV-2 through international trade. More than 40 outbreaks, which were started with the high-risk population (HRPs), such as health workers and airport staff, have been reported in China. In the latest outbreaks in Nanjing City in Jiangsu Province, high transmissibility of the breakthrough infection of the Delta variant was reported among the more vaccinated population. This evidence may point out that the current vaccination status cannot address the challenge presented by the Delta variant independently. Accordingly, a booster vaccination is necessary for China to better cope with imported cases. Based on our previous studies, we developed a mathematical model (4) to estimate the effectiveness when getting a COVID-19 booster shot among HRPs in China.

METHODS

Model Development

Based on the natural history of COVID-19 and our previous studies (5–6), we developed a Susceptible-Exposed-Symptomatic-Asymptomatic-Recovered/Removed (SEIAR) model with R (version 4.1.0, R Foundation, Vienna, Austria) to predict the cumulative case outcome of booster vaccines on 50 million high-risk individuals (making up 1.43% of the total population), who were fully vaccinated. In the model, HRPs who had been fully vaccinated were divided into five categories: Vaccinated but still Susceptible (S) due to breakthrough infection, Exposed (E), Symptomatic (I), Asymptomatic (A), and Removed (R) including recovered and death. Booster vaccinated HRPs were

also divided into five categories and denoted as S_1 , E_1 , I_1 , A_1 , and R_1 , respectively.

The model was based on the following assumptions:

a) Susceptible HRP's would be infected by contact with symptomatic/asymptomatic infections with a transmission relative rate of β .

b) The latent period of an exposed person was $1/\omega$, the latent period of an asymptomatic person was $1/\omega'$.

c) Parameter p ($0 \leq p \leq 1$) gave the proportion of individuals who had asymptomatic infections.

d) The transmission rates of S were β and $\kappa\beta$ after effective contact with I and A ($0 \leq \kappa \leq 1$).

e) Individuals in categories I and A were transferred into category R after an infectious period of $1/\gamma$ and $1/\gamma'$, respectively.

f) Case fatality rate was 0 and was not simulated in the model because vaccines were highly protective against death.

g) We assumed that the infectivity and susceptibility would be reduced after vaccination (7–8). Vaccine efficacy against infectivity (VEI) and against susceptibility (VES) (7) due to booster vaccination were denoted as $(1 - x)$ and $(1 - y)$, respectively.

The flowchart of the booster vaccination SEIAR model was shown in Figure 1.

The equations of the model were as follows:

$$\begin{aligned} \frac{dS}{dt} &= -\left(\frac{\beta S(I + \kappa A)}{N} + \frac{x\beta S(I_1 + \kappa A_1)}{N}\right) \\ \frac{dE}{dt} &= \left(\frac{\beta S(I + \kappa A)}{N} + \frac{x\beta S(I_1 + \kappa A_1)}{N}\right) - p\omega' E - (1-p)\omega E \\ \frac{dI}{dt} &= (1-p)\omega E - \gamma I \\ \frac{dA}{dt} &= p\omega' E - \gamma' A \\ \frac{dS_1}{dt} &= -\left(\frac{y\beta S_1(I + \kappa A)}{N} + \frac{xy\beta S_1(I_1 + \kappa A_1)}{N}\right) \end{aligned}$$

$$\frac{dE_1}{dt} = \left(\frac{y\beta S_1(I + \kappa A)}{N} + \frac{xy\beta S_1(I_1 + \kappa A_1)}{N}\right) - p\omega' E_1 - (1-p)\omega E_1$$

$$\frac{dI_1}{dt} = (1-p)\omega E_1 - \gamma I_1$$

$$\frac{dA_1}{dt} = p\omega' E_1 - \gamma' A_1$$

$$\frac{dR_1}{dt} = \gamma I_1 + \gamma' A_1$$

$$N = S + E + I + A + R + S_1 + E_1 + I_1 + A_1 + R_1$$

N was defined as the total population. The left side of the equation indicated the instantaneous change rate of each department at time t .

Parameter Estimation

Most parameter settings were based on our previous study (8). Considering the changes of the Delta variant, we edited the value of some parameters according to the latest research (9), including latent relative rates. The effective reproduction number (R_{eff}) was defined as the number of secondary cases an infected person can cause in a population after some interventions (8). In the study, R_{eff} was adjusted from 4 to 6 based on the current immune barrier in China and β was calculated by R_{eff} ; $1 - x$ and $1 - y$ based on simulations; ω and ω' were set as 0.33 and 0.20, respectively; γ was set as 0.2; γ' was set as 0.1; κ was set as 0.6; and p was set as 0.5 (Supplementary Table S1, available in <http://weekly.chinacdc.cn/>).

Based on our previous studies (4,8), the equation of R_{eff} from the SEIAR model was shown as follows:

$$R_{eff} = \frac{\beta}{(1-p)\omega + p\omega'} \left(\frac{(1-p)\omega}{\gamma} + \frac{\kappa p\omega'}{\gamma'} \right)$$

Sensitivity Analysis

In this study, 6 parameters were used to analyze the

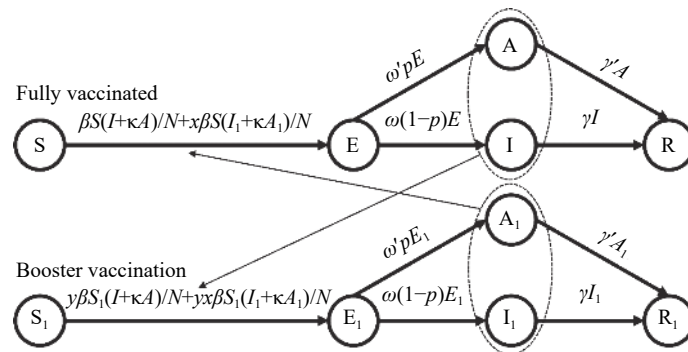


FIGURE 1. Flowchart of the booster vaccination susceptible-exposed-symptomatic-asymptomatic-recovered/removed (SEIAR) model.

sensitivity of the model: κ (0–1), ω (0.056–0.500), ω' (0.056–0.500), γ (0.111–0.333), γ' (0.048–1.000), and p (0–1). Each parameter was split into 20 values according to its range.

RESULTS

Our model showed that under the current vaccination strategy, there still existed a high risk of an outbreak in Chinese HRP. Further simulation showed that we could not prevent outbreaks when 80% of HRP were covered with a booster vaccine, unless the effective reproduction number (R_{eff}) = 4.0 and the effectiveness of the booster (EB) was high, indicated by

VES and VEI exceeding 90% (Figure 2A). Furthermore, when 90% of HRP were covered with a booster vaccine, only an EB with the values of VES and VEI exceeding 60% were required (Figure 2B), and with 99% coverage of HRP was needed for the VES and VEI to only have to exceed 50% (Figure 2C). However, VES and VEI both needed to exceed 70% at 99% coverage of HRP under high transmissibility conditions (R_{eff} =6.0) (Figure 2I).

To estimate the reality as closely as possible, we selected high transmissibility (R_{eff} =6.0) and covered 99% of HRP with booster shots and assumed the VES and VEI were both 50%. Cumulative cases did not seem to be sensitive to the six parameters (κ , ω , ω' , γ , γ' , p), but the proportion of cases was sensitive to

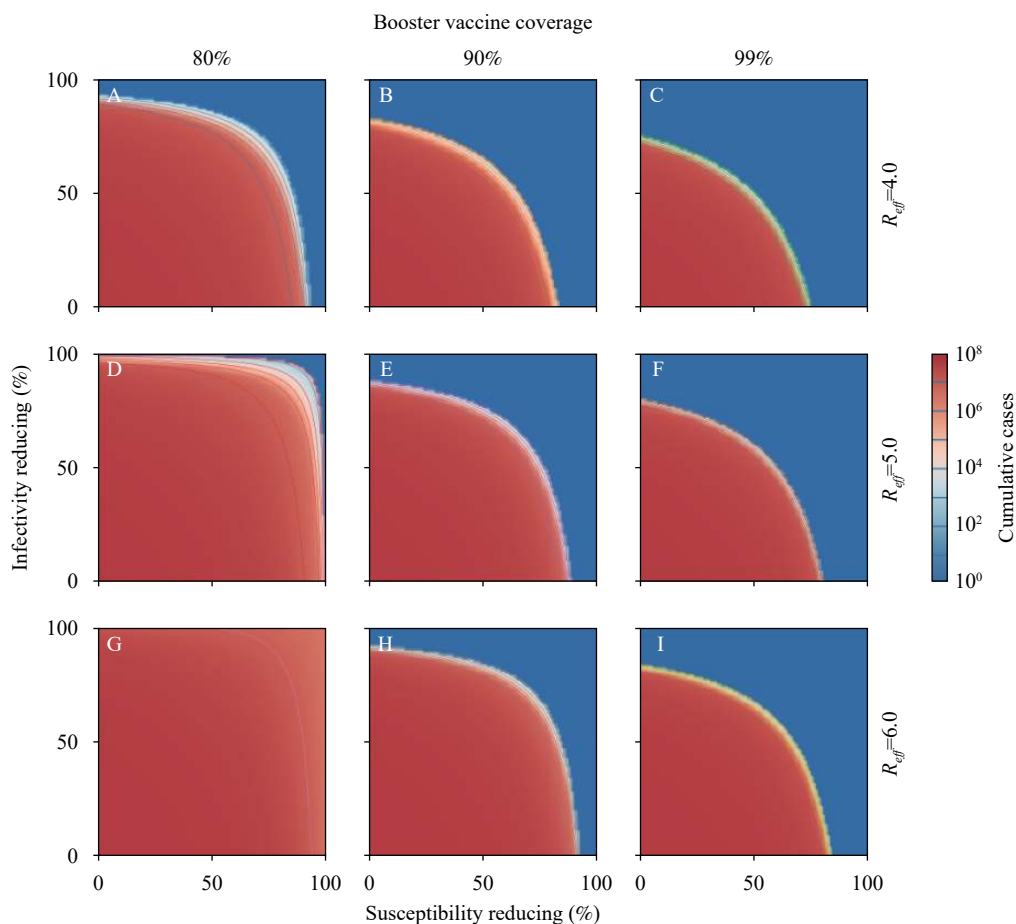


FIGURE 2. Simulated cumulative cases of COVID-19 for different effective reproduction numbers (R_{eff}) and booster vaccine coverage. (A) Booster vaccine coverage of 80% and R_{eff} at 4.0, (B) Booster vaccine coverage of 90% and R_{eff} at 4.0, (C) Booster vaccine coverage of 99% and R_{eff} at 4.0, (D) Booster vaccine coverage of 80% and R_{eff} at 5.0, (E) Booster vaccine coverage of 90% and R_{eff} at 5.0, (F) Booster vaccine coverage of 99% and R_{eff} at 5.0, (G) Booster vaccine coverage of 80% and R_{eff} at 6.0, (H) Booster vaccine coverage of 90% and R_{eff} at 6.0, (I) Booster vaccine coverage of 99% and R_{eff} at 6.0.

Note: We estimate the effectiveness of booster shots in high-risk populations, simulated by setting R_{eff} from 4 to 6 and booster vaccine coverage with 80%, 90%, and 99%, respectively. We assume that infectivity and susceptibility would be reduced after vaccination (7–8), with scenarios that booster vaccine can further reduce infectivity (0–100%) and susceptibility (0–100%). Logarithmic contour was adopted to display the outcome of this study because the outcome varies considerably between different conditions.

latent periods and the proportion of asymptomatic cases (Supplementary Figure S1, available in <http://weekly.chinacdc.cn/>).

We adjusted parameters and re-ran the SEIAR model to simulate a different scenario, which presented a similar result (Supplementary Figure S2, available in <http://weekly.chinacdc.cn/>). Considering COVID-19 cases were regularly divided into confirmed cases and symptomatic cases, we also re-ran the SEIAR model to predict the dynamic evolution of COVID-19 with outcomes of confirmed cases and symptomatic cases (Supplementary Figures S3–S4, available in <http://weekly.chinacdc.cn/>). The results were consistent with our findings where cumulative cases were selected as the outcome index.

DISCUSSION

We used the SEIAR model to consider the infectivity of asymptomatic cases and previously described parameters to discover whether the hypotheses that had been put forward was feasible. All else being equal, low booster vaccine coverage cannot sustain the barrier of immunity, let alone against increased infectivity variant over time. Our finding suggests that the VES and VEI of both at least 70% are required when covering 99% of HRP under high transmissibility ($R_{eff}=6.0$). However, 90% coverage at equal conditions can generate a hundredfold increase, despite lower coverage of the booster vaccine.

Undoubtedly, current vaccines had high effectiveness to reduce severe and dead cases. However, it could not control the transmission of the Delta variant in China due to breakthrough infection. Two strategies, including improving the vaccine effectiveness (VE) and adding the booster dose among HRPs, should be simultaneously applied for controlling the high transmission of coronavirus variants. Therefore, it is essential to assess the VES and VEI of current vaccines for the booster. Considering substantial differences in VE, further application of booster shots in HRPs should be based on high VE to increase antibody concentrations, including selecting other kinds of vaccines and administration of booster doses (10).

This study was subject to some limitations. First, our model did not consider the transmission between HRPs and non-HRPs which was widely happening in current outbreaks. Second, although our model represents HRPs in China, our initial population size ($N=50,000,000$) did not consider the influence of

occupation in which contact rates and susceptibility were different.

Under the current vaccination strategy, which could not control the transmission of the Delta variant in China due to breakthrough infection, there was still a high risk of outbreaks of HRPs in China. Therefore, we recommend booster vaccination in HRPs.

Conflicts of interest: No conflicts of interest reported.

Funding: Bill & Melinda Gates Foundation (INV-005834).

doi: 10.46234/ccdcw2021.259

Corresponding authors: Yan Niu, niuyan@chinacdc.cn; Tianmu Chen, chentianmu@xmu.edu.cn.

¹ State Key Laboratory of Molecular Vaccinology and Molecular Diagnostics, School of Public Health, Xiamen University, Xiamen, Fujian, China; ² Université de Montpellier, Montpellier, France; CIRAD, Intertryp, Montpellier, France; IES, Université de Montpellier-CNRS, Montpellier, France; ³ Chinese Center for Disease Control and Prevention, Beijing, China.

Submitted: October 14, 2021; Accepted: October 21, 2021

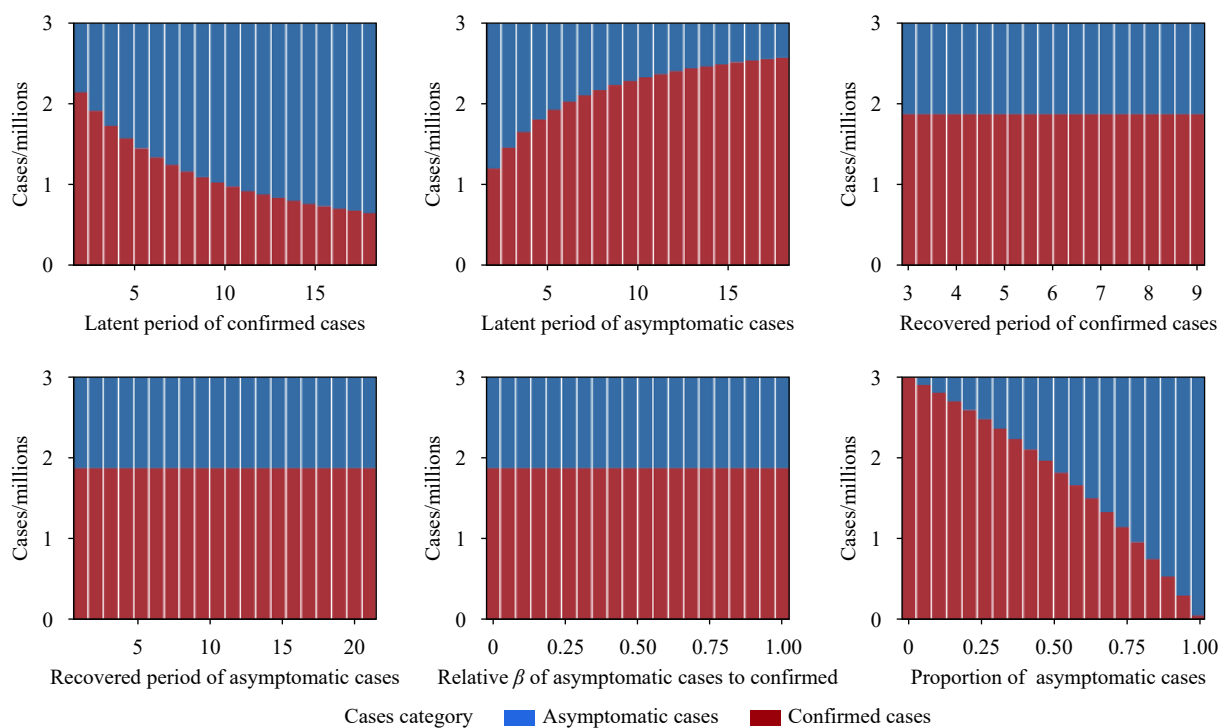
REFERENCES

- Kershner I. Israel will require a booster shot to be considered fully vaccinated. *The New York Times*, 2021. <https://nytimes.blog/israel-will-require-a-booster-shot-to-be-fully-vaccinated/>. [2021-10-3].
- Bar-On YM, Goldberg Y, Mandel M, Bodenheimer O, Freedman L, Kalkstein N, et al. Protection of BNT162b2 vaccine booster against covid-19 in Israel. *N Engl J Med* 2021;385(15):1393 – 4000. <http://dx.doi.org/10.1056/NEJMoa2114255>.
- World Health Organization. WHO coronavirus (COVID-19) dashboard. Geneva: World Health Organization, 2021. <https://covid19.who.int/>. [2021-10-6]
- Zhao ZY, Zhu YZ, Xu JW, Hu SX, Hu QQ, Lei Z, et al. A five-compartment model of age-specific transmissibility of SARS-CoV-2. *Infect Dis Poverty* 2020;9(1):117. <http://dx.doi.org/10.1186/s40249-020-00735-x>.
- Zhao QL, Yang M, Wang Y, Yao LS, Qiao JG, Cheng ZY, et al. Effectiveness of interventions to control transmission of reemerged cases of COVID-19 — Jilin Province, China, 2020. *China CDC Wkly* 2020;2(34):651 – 4. <http://dx.doi.org/10.46234/ccdcw2020.181>.
- Chen TM, Rui J, Wang QP, Zhao ZY, Cui JA, Yin L. A mathematical model for simulating the phase-based transmissibility of a novel coronavirus. *Infect Dis Poverty* 2020;9(1):24. <http://dx.doi.org/10.1186/s40249-020-00640-3>.
- Yang Y, Sugimoto JD, Halloran ME, Basta NE, Chao DL, Matrajt L, et al. The transmissibility and control of pandemic influenza A (H1N1) virus. *Science* 2009;326(5953):729 – 33. <http://dx.doi.org/10.1126/science.1177373>.
- Zhao ZY, Niu Y, Luo L, Hu QQ, Yang TL, Chu MJ, et al. The optimal vaccination strategy to control COVID-19: a modeling study based on the transmission scenario in Wuhan City, China. 2020. <http://dx.doi.org/10.2139/ssrn.3719045>.
- Li BS, Deng AP, Li KB, Hu Y, Li ZC, Xiong QL, et al. Viral infection and transmission in a large, well-traced outbreak caused by the SARS-CoV-2 Delta variant. medRxiv 2021. <http://dx.doi.org/10.1101/2021.07.07.21260122>.
- Callaway E. Mix-and-match COVID vaccines trigger potent immune response. *Nature* 2021;593(7860):491. <http://dx.doi.org/10.1038/d41586-021-01359-3>.

SUPPLEMENTARY TABLE 1. Parameters in the booster vaccination SEIAR model.

Parameter	Definition	Unit	Value	Range	Method
β	Transmission relative rate	/ (Individuals·days)	-	≥ 0	Basing on different R_{eff} values
$1-x$	VEI	1	-	0-1	Simulated
$1-y$	VES	1	-	0-1	Simulated
ω	Latent relative rate of the confirmed case	/days	0.33	0.056-0.500	Reference ⁽¹⁾
ω'	Latent relative rate of the asymptomatic case	/days	0.2	0.056-0.500	Reference ⁽¹⁾
γ	Recovered/Removed rate of the confirmed case	/days	0.2	0.111-0.333	Reference ⁽²⁾
γ'	Recovered/Removed rate of the asymptomatic case	/days	0.1	0.048-1.000	Reference ⁽²⁾
κ	Relative transmissibility rate of asymptomatic to confirmed cases		0.6	0-1	Reference ⁽²⁾
p	Proportion of the asymptomatic cases		0.5	0-1	Reference ⁽²⁾

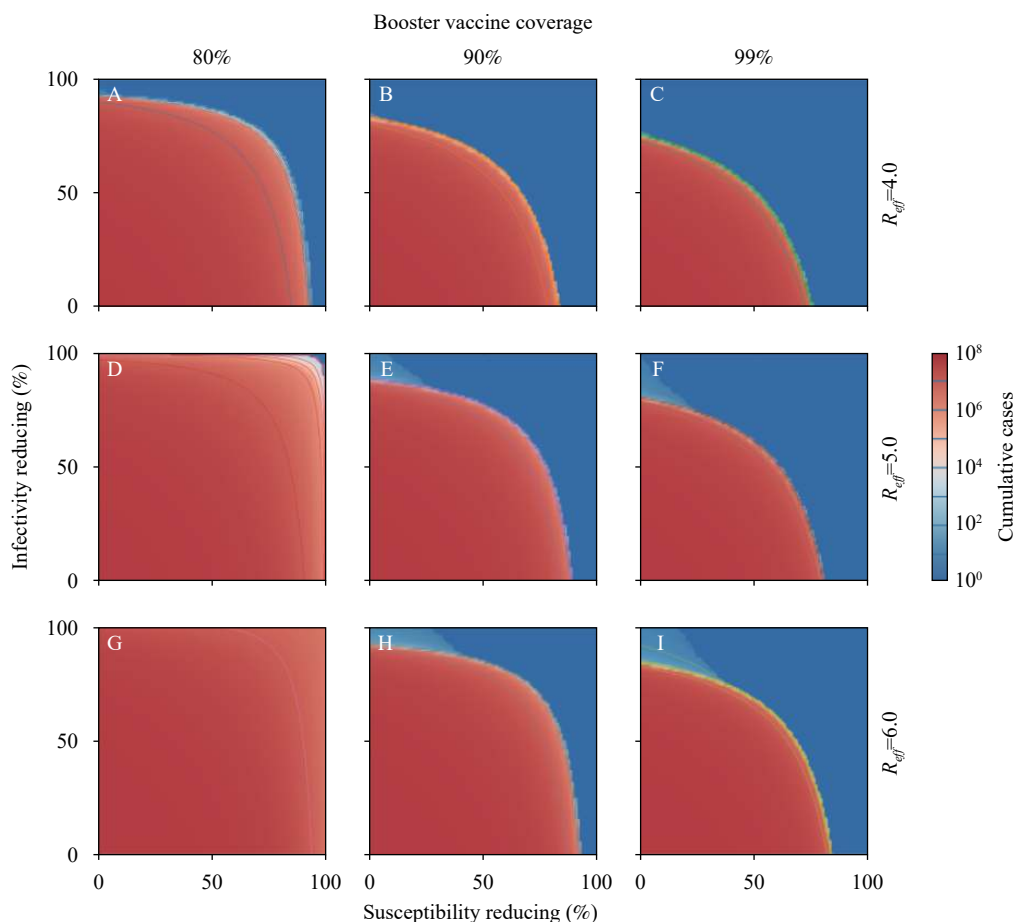
Abbreviations: SEIAR=Susceptible-Exposed-Symptomatic-Asymptomatic-Recovered/Removed; VEI=vaccine efficacy against infectivity; VES=vaccine efficacy against susceptibility; R_{eff} =effective reproduction number.



SUPPLEMENTARY FIGURE S1. Sensitivity analysis of SEIAR model.

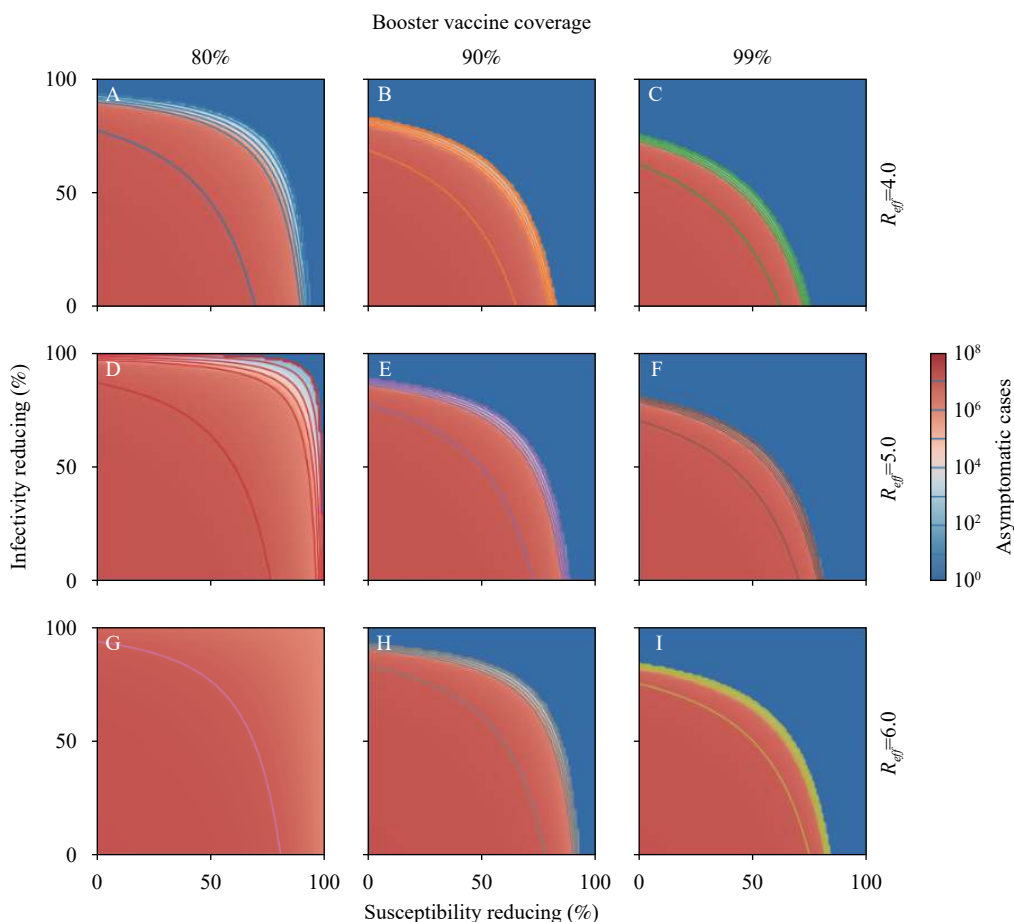
Note: Variable parameters will influence the proportion of asymptomatic cases and confirmed cases. However, cumulative cases do not seem to be influenced by parameters.

Abbreviation: SEIAR=Susceptible-Exposed-Symptomatic-Asymptomatic-Recovered/Removed.



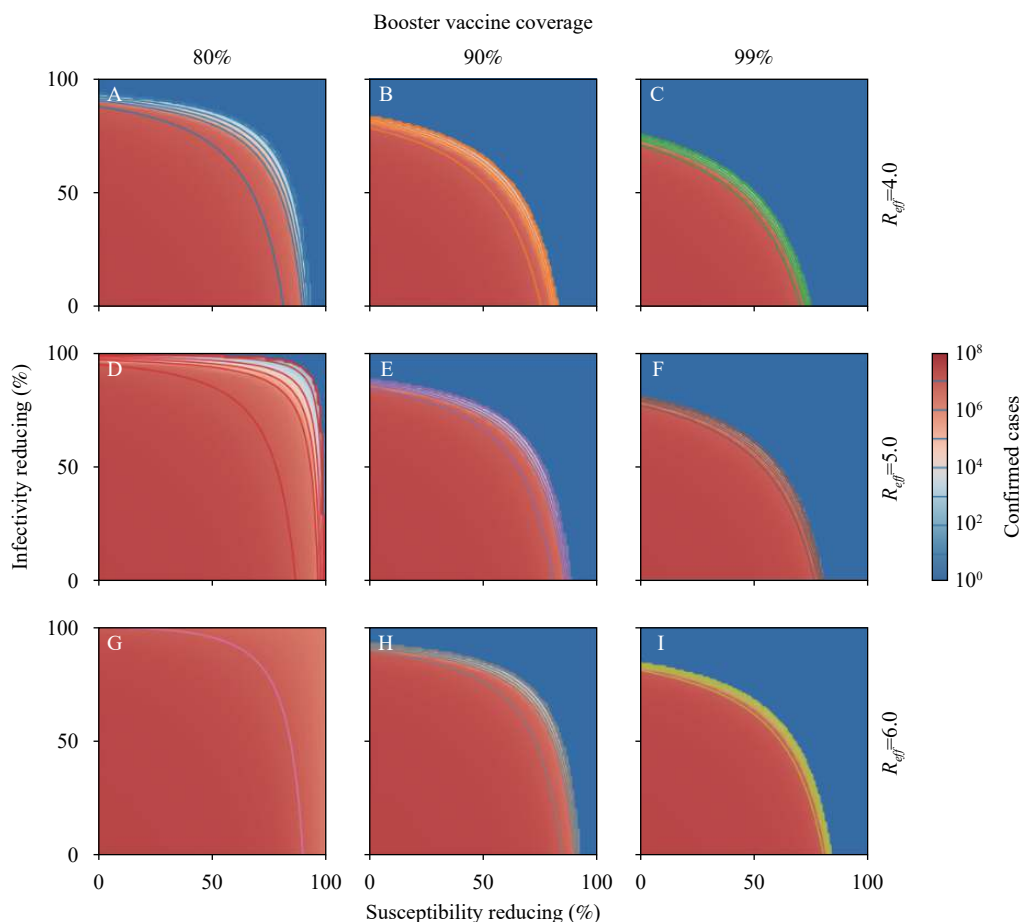
SUPPLEMENTARY FIGURE S2. Simulated cumulative cases of COVID-19 for different effective reproduction numbers (R_{eff}) and booster vaccine coverage. (A) Booster vaccine coverage of 80% and R_{eff} at 4.0, (B) Booster vaccine coverage of 90% and R_{eff} at 4.0, (C) Booster vaccine coverage of 99% and R_{eff} at 4.0, (D) Booster vaccine coverage of 80% and R_{eff} at 5.0, (E) Booster vaccine coverage of 90% and R_{eff} at 5.0, (F) Booster vaccine coverage of 99% and R_{eff} at 5.0, (G) Booster vaccine coverage of 80% and R_{eff} at 6.0, (H) Booster vaccine coverage of 90% and R_{eff} at 6.0, (I) Booster vaccine coverage of 99% and R_{eff} at 6.0.

Note: We re-run the model based on adjusting parameters (ω' and ω both are 1 days⁻¹, γ' and γ both are 0.5 days⁻¹, κ is 0.25 and p is 0.5). Logarithmic contour is adopted to display the outcome of this study because the outcome varies considerably between different conditions.



SUPPLEMENTARY FIGURE S3. Simulated asymptomatic cases and index case of COVID-19 for different effective reproduction numbers (R_{eff}) and booster vaccine coverage. (A) Booster vaccine coverage of 80% and R_{eff} at 4.0, (B) Booster vaccine coverage of 90% and R_{eff} at 4.0, (C) Booster vaccine coverage of 99% and R_{eff} at 4.0, (D) Booster vaccine coverage of 80% and R_{eff} at 5.0, (E) Booster vaccine coverage of 90% and R_{eff} at 5.0, (F) Booster vaccine coverage of 99% and R_{eff} at 5.0, (G) Booster vaccine coverage of 80% and R_{eff} at 6.0, (H) Booster vaccine coverage of 90% and R_{eff} at 6.0, (I) Booster vaccine coverage of 99% and R_{eff} at 6.0.

Note: Adding index case, instead of only asymptomatic cases, was selected as the outcome index of this study. Because asymptomatic cases do not generate in our model in some situations and logarithmic transform cannot deal with 0 asymptomatic case.



SUPPLEMENTARY FIGURE S4. Simulated confirmed cases of COVID-19 for different effective reproduction numbers (R_{eff}) and booster vaccine coverage. (A) Booster vaccine coverage of 80% and R_{eff} at 4.0, (B) Booster vaccine coverage of 90% and R_{eff} at 4.0, (C) Booster vaccine coverage of 99% and R_{eff} at 4.0, (D) Booster vaccine coverage of 80% and R_{eff} at 5.0, (E) Booster vaccine coverage of 90% and R_{eff} at 5.0, (F) Booster vaccine coverage of 99% and R_{eff} at 5.0, (G) Booster vaccine coverage of 80% and R_{eff} at 6.0, (H) Booster vaccine coverage of 90% and R_{eff} at 6.0, (I) Booster vaccine coverage of 99% and R_{eff} at 6.0.

REFERENCES

- Li BS, Deng AP, Li KB, Hu Y, Li ZC, Xiong QL, et al. Viral infection and transmission in a large well-traced outbreak caused by the delta SARS-CoV-2 variant. medRxiv 2021. <http://dx.doi.org/10.1101/2021.07.07.21260122>.
- Zhao ZY, Niu Y, Luo L, Hu QQ, Yang TL, Chu MJ, et al. The optimal vaccination strategy to control COVID-19: a modeling study based on the transmission scenario in Wuhan City, China. 2020. <http://dx.doi.org/10.2139/ssrn.3719045>.