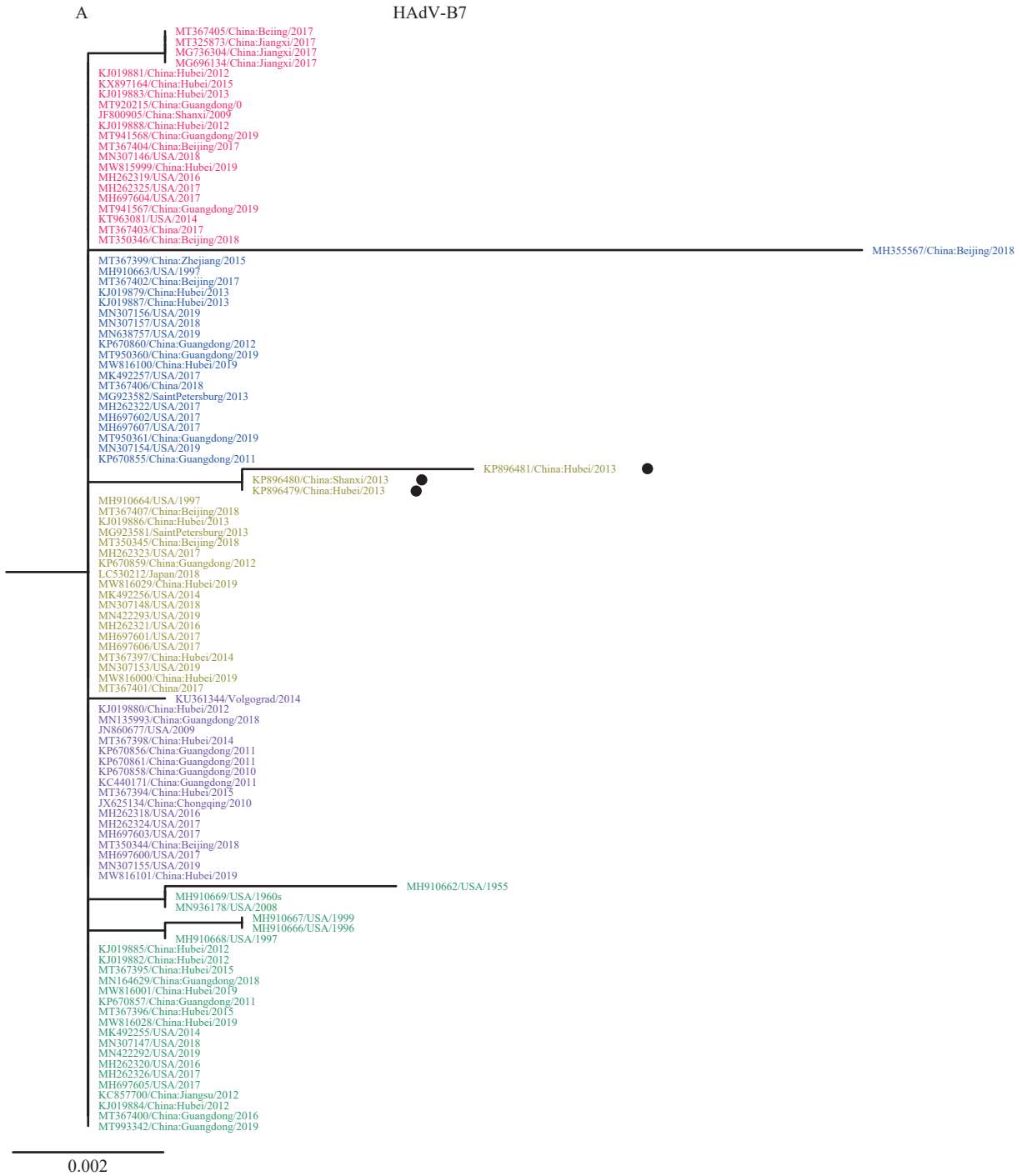
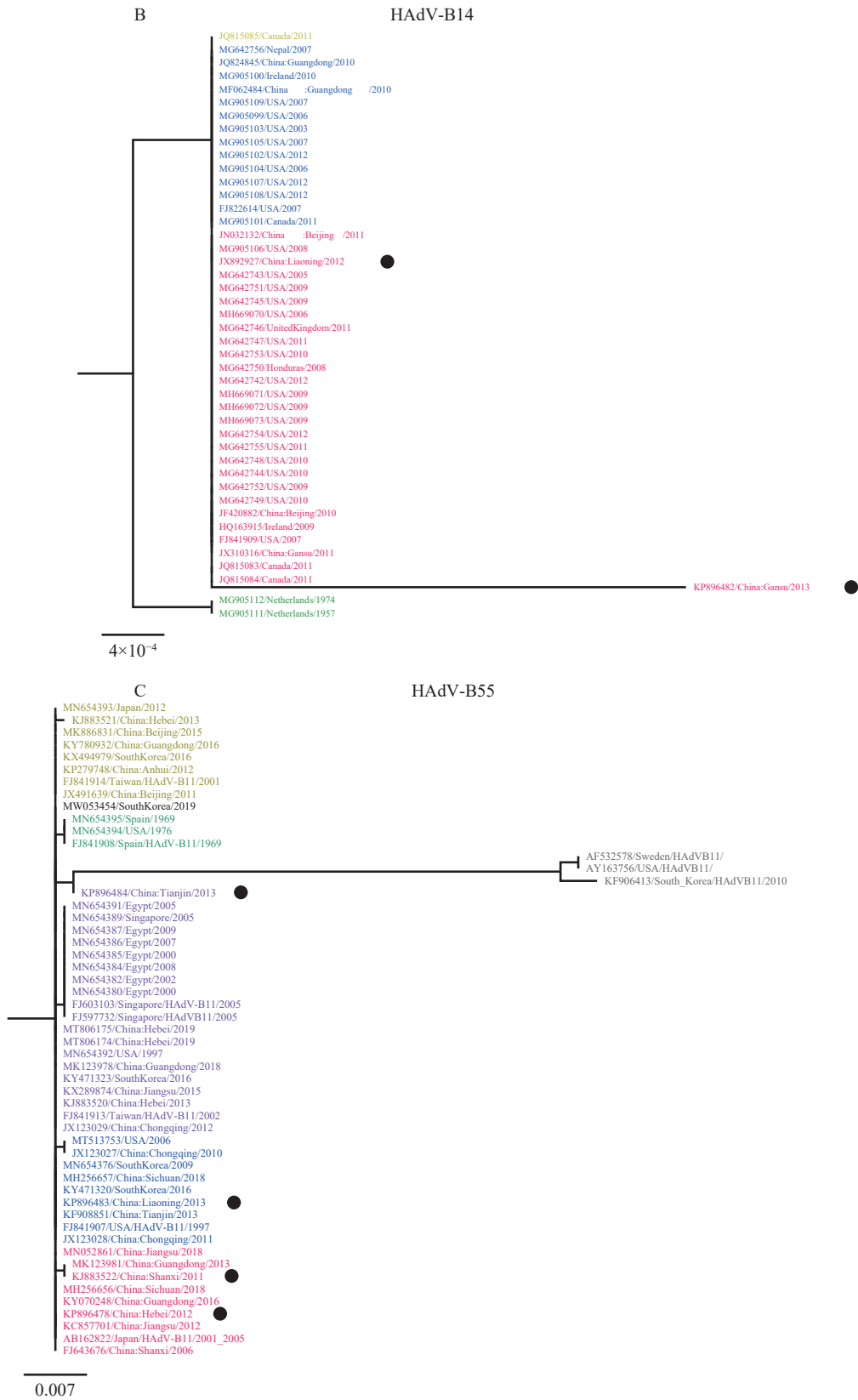


SUPPLEMENTARY FIGURE S1. Phylogenetic tree was constructed based on the hexon gene using maximum likelihood method with 1000 bootstrap by MEGA 7.0. (A) HAdV-B7; (B) HAdV-B14; (C) HAdV-B55.

Note: The strains labeled with black dots were obtained from the current study.



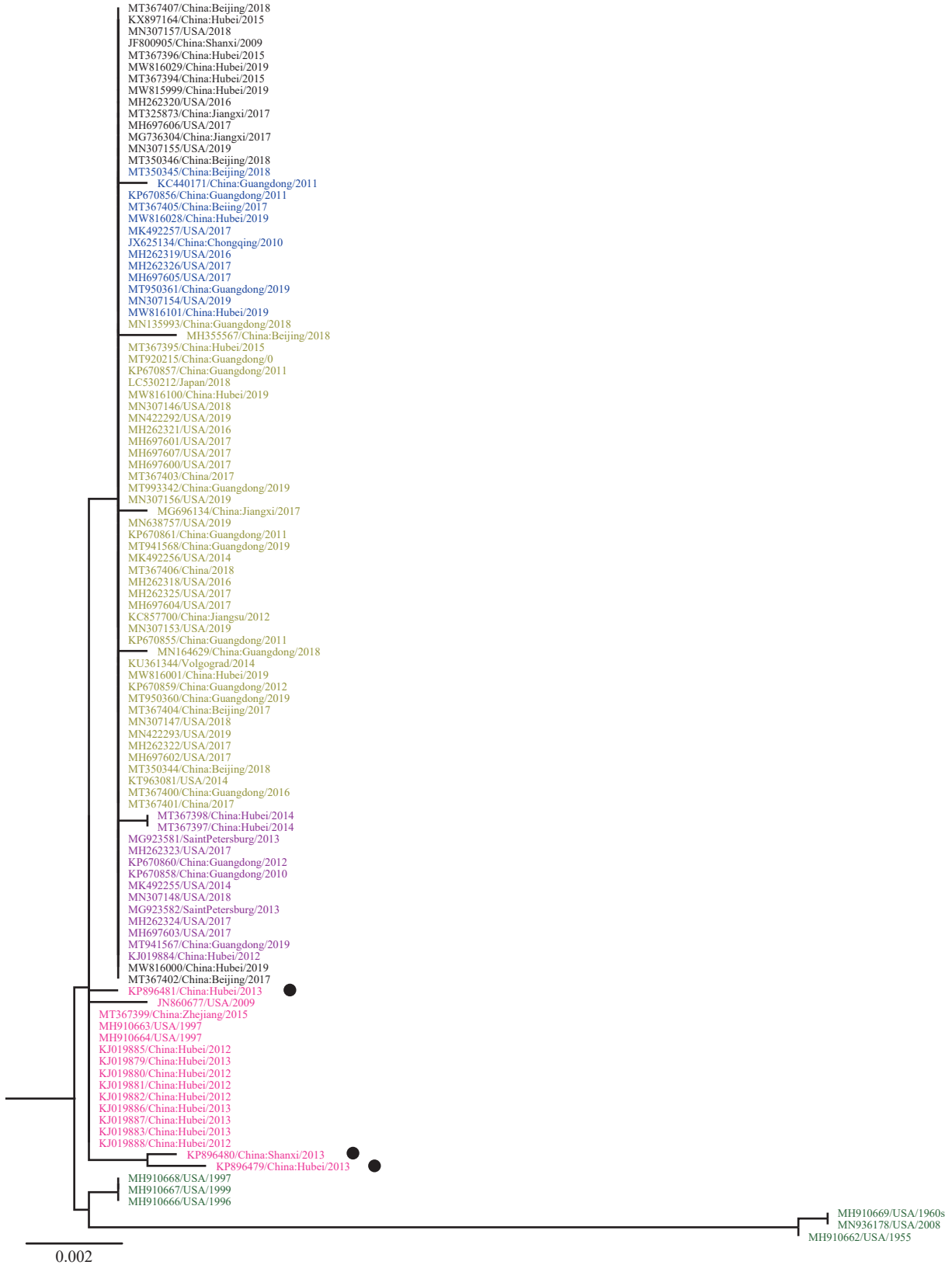


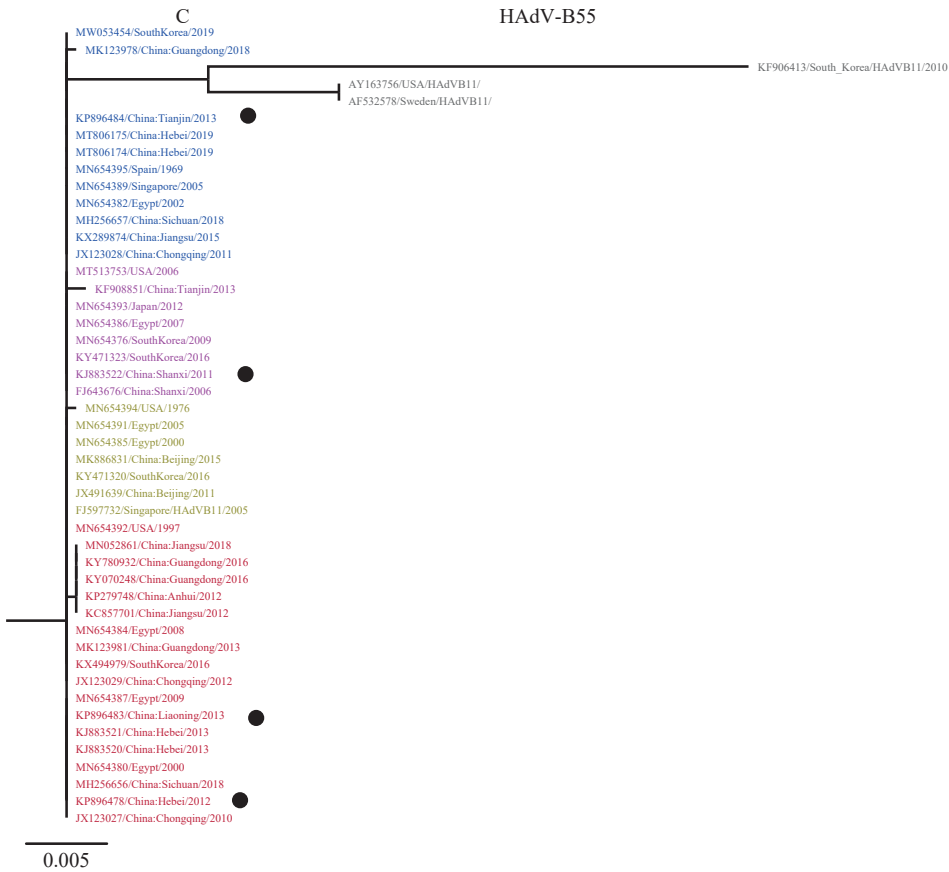
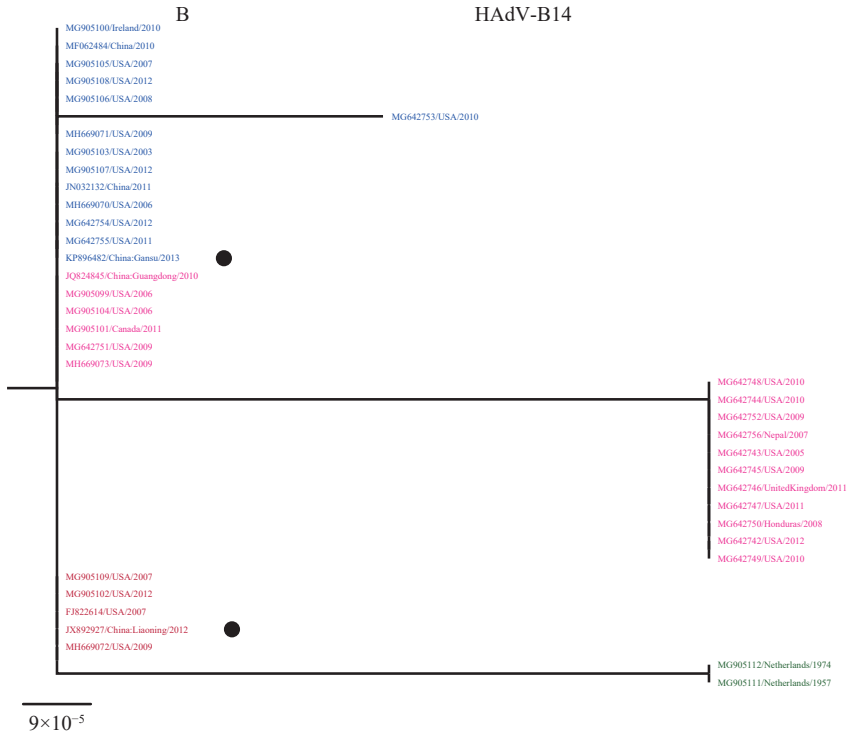
SUPPLEMENTARY FIGURE S2. Phylogenetic tree was constructed based on the Fiber gene using maximum likelihood method with 1,000 bootstrap by MEGA 7.0. (A) HAdV-B7; (B) HAdV-B14; (C) HAdV-B55.

Note: The strains labeled with black dots were obtained from the current study.

A

HAdV-B7





SUPPLEMENTARY FIGURE S3. Phylogenetic tree was constructed based on the Penton gene using maximum likelihood method with 1,000 bootstrap by MEGA 7.0. (A) HAdV-B7; (B) HAdV-B14; (C) HAdV-B55.

Note: The strains labeled with black dots were obtained from the current study.