

## Methods and Applications

# A Longitudinal Cohort Study Using a Modified Child-Pugh Score to Escalate Respiratory Support in COVID-19 Patients — Hubei Province, China, 2020

Yibai Xiong<sup>1</sup>; Yan Ma<sup>1</sup>; Yaxin Tian<sup>1</sup>; Chi Zhang<sup>2</sup>; Wei Yang<sup>1</sup>; Bin Liu<sup>1</sup>; Lianguo Ruan<sup>3</sup>; Cheng Lu<sup>1,†</sup>; Luqi Huang<sup>4,†</sup>

## ABSTRACT

**Background:** We explored a phenotype of liver dysfunction based on modified Child-Pugh (MCP) with coronavirus disease 2019 (COVID-19) and evaluated its relationship with escalation of respiratory support and survival.

**Methods:** This was a retrospective cohort study involving COVID-19 in-patients at the Wuhan Jinyintan Hospital. This study was performed between January 24, 2020 and March 31, 2020. Escalation of respiratory support and survival were evaluated. Furthermore, the trajectory of liver function was delineated considering the risk of escalation of respiratory support and survival using multilevel logistic regression.

**Results:** A total of 298 patients were enrolled in this study. A higher proportion of patients with MCP-B on admission exhibited an escalated respiratory support (26 of 55; 47.3%) when compared to patients with MCP-A (9 of 62; 14.5%), indicating that MCP-B was strongly associated with escalation of respiratory support [adjusted hazard ratio (HR): 4.530; 95% confidence interval (CI): 2.060–9.970;  $P < 0.001$ ]. Among the patients on escalated respiratory support, 5 (55.6% of 9) patients with MCP-A died compared to 10 (38.5% of 26) of the patients with MCP-B. Patients with a history of liver disease had a higher mortality risk (adjusted HR: 7.830; 95% CI: 1.260–48.420).

**Conclusion:** MCP is efficient at stratifying liver dysfunction levels in COVID-19 patients and is strongly associated with escalation of respiratory support.

## INTRODUCTION

Liver dysfunction is an independent risk factor for organ dysfunction in coronavirus disease 2019 (COVID-19) patients (1). Given the high mortality rate associated with COVID-19, it has not been

established which liver dysfunction groups are at higher risk.

The criteria for evaluation of liver dysfunction in COVID-19 patients are incompletely defined. Previous studies have reported independent associations between liver functions and disease progression (2). The Child-Pugh score is a classic tool for evaluating liver dysfunction levels (3). However, it has some limitations. Evaluation of ascites and hepatic encephalopathy are subjective to some degree. Moreover, there is a causal relationship between ascites and hypoalbuminemia that if determined at the same time, would lead to a bias. Therefore, an objective, recognizable method for evaluating liver dysfunction in COVID-19 patients is crucial. Based on evidence from previous studies (4–6), discussion with hepatologists, and our observation that changes in aspartate aminotransferase and gamma glutamyl transpeptidase levels are not clinically significant (7), we modified the Child-Pugh score. Furthermore, elevations in lactate dehydrogenase levels are not significant in COVID-19 progression while elevations in aspartate aminotransferase levels are strongly associated with increased neutrophil counts and decreased lymphocyte counts, indicating the severity of viral pneumonia (4). Therefore, we replaced ascites with aspartate aminotransferase and defined its cut-off value as 1.5 times the upper limit of normal [ $<35$  IU/L, 1 points;  $35$ – $87.5$  IU/L, 2 points;  $>87.5$  IU/L, 3 points ( $35$  IU/L is the standard value in Jinyintan Hospital)] in the modified Child-Pugh (MCP) score as a new evaluation of liver dysfunction in COVID-19 patients. This cutoff value was established based on previous studies (8–9). In this study, we aimed to assess the impact of liver dysfunction stratification in COVID-19 by evaluating longitudinal associations between MCP and escalated respiratory support.

## METHODS

### Study Design and Participants

This was a retrospective longitudinal cohort study involving COVID-19 patients that were confirmed by reverse transcriptase polymerase chain reaction (RT-PCR), based on the Chinese diagnosis and treatment protocol for COVID-19 (Trial Version 7) (10) admitted at the Jinyintan Hospital. Epidemiological, clinical, and laboratory data for patients were collected between January 24, 2020 and March 31, 2020, at which point patients were admitted and no more patients were admitted. Individuals who were 18 years of age or older, and who tested positive for COVID-19 by real-time RT-PCR were included in this study. No exclusion criteria were applied.

### Data Collection

Nose and throat swab specimens or nasopharyngeal aspirates collected from patients were tested for COVID-19 using RT-PCR. Epidemiological information, medical history, and clinical symptoms were recorded upon admission. Imaging and laboratory tests were routinely performed for all patients. Data were extracted from hospital information systems (HISs) using a standardized data collection form. All data were recorded daily. A group of experienced physicians determined the frequency of examinations and then reviewed and cross-checked the data. Implausible values for variables were identified with the data entry department and confirmed by physicians.

### Definition

An axillary temperature of at least 37.3 °C was considered as fever. The six-point ordinal scale of clinical status for respiratory support was categorized as follows: 1) 6 points, death; 2) 5 points, need for invasive ventilator; 3) 4 points, high flow humidification oxygen/high frequency oxygen/non-

invasive ventilator are needed; 4) 3 points, low flow (1 liters – 5 liters per minute) face mask/nasal cannula for oxygen inhalation; 5) 2 points, oxygen saturation of above 93 without oxygen inhalation; 6) 1 point, discharge (11). Mild illness was defined as 2 points, while severe illness was defined as 3 points or above. Escalation of respiratory support was defined as a transition from 2 or 3 points to 4 points or higher.

Chest x-ray and chest computed tomography abnormality (CXR): 0, bilateral pneumonia with no abnormal lesions (unilateral or bilateral pneumonia); 1, unilateral pneumonia with multiple mottling and ground-glass opacity; 2, bilateral pneumonia with multiple mottling and ground-glass opacity.

The practical definition of liver dysfunction was modified from studies on the Child-Pugh score, and other studies that reported that liver dysfunction is highly correlated with COVID-19 progression and associated mortality (12–14). The MCP was defined as follows (Table 1): Aspartate aminotransferase (AST) (U/L): <35, 1 point; 35–70, 2 points; >70, 3 points (35 U/L is the normal standard in Jinyintan Hospital). Total bilirubin (TBIL) (μmol/L): <34, 1 point; 34–51, 2 points; >51, 3 points. Albumin (ALB)(g/L): >35, 1 point; 28–35, 2 point; <28, 3 points. Prothrombin time (PT) (s): prolong <4, 1 point; 4–6, 2 points; >6, 3 points. It was graded as 5 points or below for Child-Pugh-A; 6–9 points for Child-Pugh-B; and 10–15 points for Child-Pugh-C. The AST cut-off values were obtained from literature reviews (8,15–16) and extensive discussion with hepatology experts and infectious disease specialists.

### Statistical Analysis

Categorical and continuous variables were presented as percentages (%) and as means [95% confidence interval (CI)], respectively, while normally distributed data were presented by their medians [interquartile range (IQR)]. For normally distributed data, independent t tests were performed to compare means between two groups for continuous variables; otherwise, the Mann-Whitney test was used. For

TABLE 1. Modified Child-Pugh scoring system.

Item	Score		
	1	2	3
Total bilirubin, mmol/L	<34	34–51	>51
Albumin, g/L	>35	28–35	<28
Aspartate aminotransferase, U/L	<35	35–70	>70
Prothrombin time prolongation, s	<4	4–6	>6

categorical variables, we used Pearson's chi-squared test or Fisher's exact test to determine significant differences.

Probability of escalation was calculated using Kaplan-Meier curves with death or escalation up to 2 points or above as events, and surviving patients recorded in 30 days. Longitudinal analysis was performed using scatterplots of daily results against time, which was visualized by the estimated survival time distribution plot. The Cox regression model was used to simultaneously evaluate the relationship between various risk factors and survival time of patients while the log-rank test was used to determine whether differences in survival rates were statistically significant. Missing data were carried by results from the previous day and only estimated for the repeated measures multivariate model. If more than one result was recorded on a certain day, the most deviated result was chosen to reveal the reality of availability of given information to a clinician at a random time. A locally estimated scatterplot smoothing (LOESS) curve showing 95% CIs for the daily mean was used to present dynamic changes in liver function markers based on the severity of COVID-19 (default settings with a polynomial degree of 2, Gaussian kernel, and interpolation on cell size of 0.2). The mixed-effect Cox proportional hazards regression models were used to establish the factors that were associated with escalation of respiratory support or mortality. A two-sided  $\alpha$  of  $<0.05$  was considered statistically significant. All analyses were performed using R statistical software (version 3.6.2; The R Foundation for Statistical Computing, Vienna, Austria)

## RESULTS

### Patient Population

Out of the 307 patients, 9 patients were excluded because of missing data. Baseline characteristics of this study are summarized in the appendix (Supplementary Table S1 available in <http://weekly.chinacdc.cn/>). The median age was 60 years (IQR: 49–68), 166 (55.70%) participants were male while 132 (44.30%) participants were female. A total of 112 patients (37.58%) had extra oxygen supply, while 186 (62.42%) only had occasional oxygen inhalation. Among them, 6 (2.0%) patients had fatty liver disease while 10 (3.4%) had viral hepatitis.

### Association Between Liver Dysfunction and Escalation of Respiratory Support

After admission, 35 patients were eligible for escalation of respiratory support. Among them, 30 patients were originally included in the severe group while the remaining 5 patients were in the mild group. Since the severe group had higher probability for escalated respiratory support, the study compared liver function among patients who were eligible for escalation of respiratory support and those who were not eligible in the severe group. Because patients in severe group tended to be eligible for escalation, AST levels were highly elevated in the escalation group (Supplementary Table S2 available in <http://weekly.chinacdc.cn/>).

Then, the trajectory of liver function was assessed in severe patients, which were divided by two groups: the escalated group included escalated patients, while the mend group included patients in stable condition. The LOESS model was used to show the trajectory of ALB, AST, TBIL, and PT in the escalated and mend groups. There were low ALB levels, significant elevated AST levels, higher TBIL levels, and first lower but delayed marked PT (Figure 1). Upon admission, MCP levels were elevated in patients that were eligible for escalation than in those who were not, as determined by the mixed-effects Cox model. Age, gender, comorbidity, and drug were adjusted as confounders [adjusted hazard ratio (HR): 4.530; 95% CI: 2.058–9.970;  $P<0.001$ ] (Figure 2).

A total of 62 (53.0%) patients met the MCP-A level criteria, among whom 9 (14.5%) patients needed escalation; 55 (47.0%) patients met the MCP-B level criteria, among whom 26 (47.3%) patients needed escalation. For the MCP-B patients, after adjusting for age, sex, comorbidity, and drug usage, escalation time was shorter when compared to MCP-A patients (likelihood ratio test  $P<0.001$ ) (Figure 3).

### The Association Between Modified Child-Pugh Score Levels and Mortality

Among the 35 patients that were eligible for escalated respiratory support, 20 survived and were discharged. Baseline laboratory results are summarized in the appendix (Supplementary Table S3 available in <http://weekly.chinacdc.cn/>). Patients that were eligible and survived were younger (61.33 years old), had a shorter PT (11.25 s), and elevated ALB levels

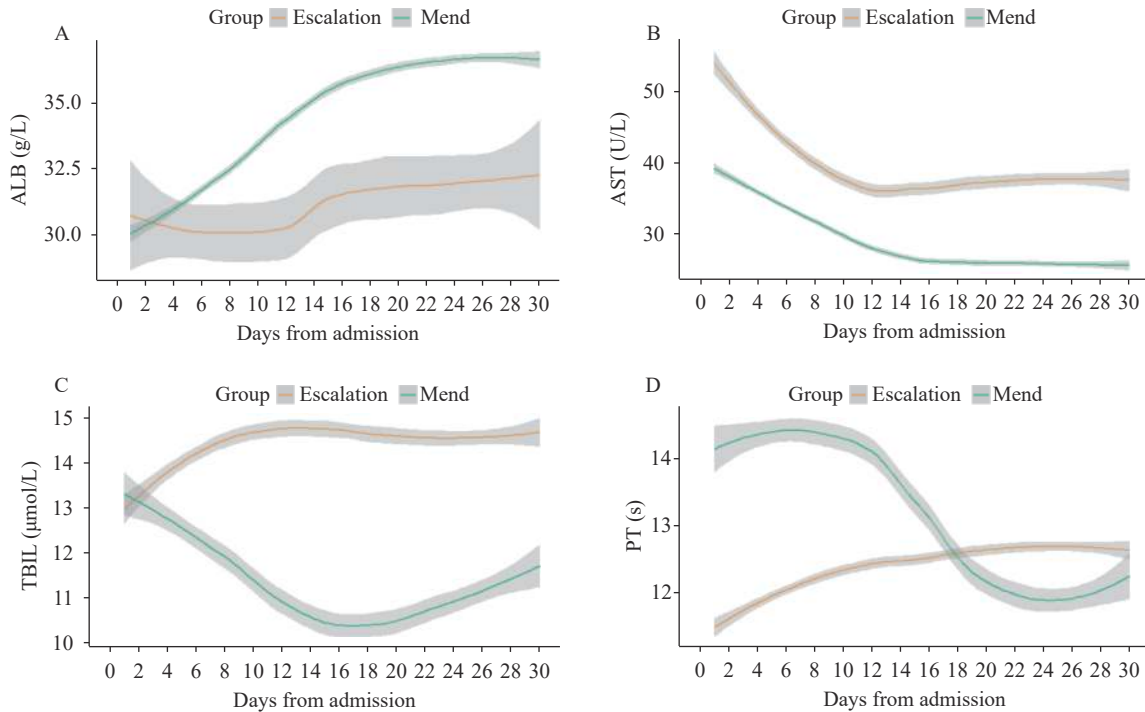


FIGURE 1. Longitudinal laboratory findings of liver function based on a MCP score in escalated respiratory support patients. (A–D) Laboratory results (ALB, AST, TBIL, and PT) based on the MCP score plotted against time with 95% confidence interval, which were fitted by locally estimated scatterplot smoothing curves. Worst daily mean values for all the escalated respiratory support patients were provided, and missing data were imputed from the last day valued. Laboratory results for the escalated respiratory support patients were stratified within 30 days of admission. Abbreviations: MCP=modified Child-Pugh; ALB=albumin; AST=aspartate aminotransferase; TBIL=total bilirubin; PT=prothrombin time.

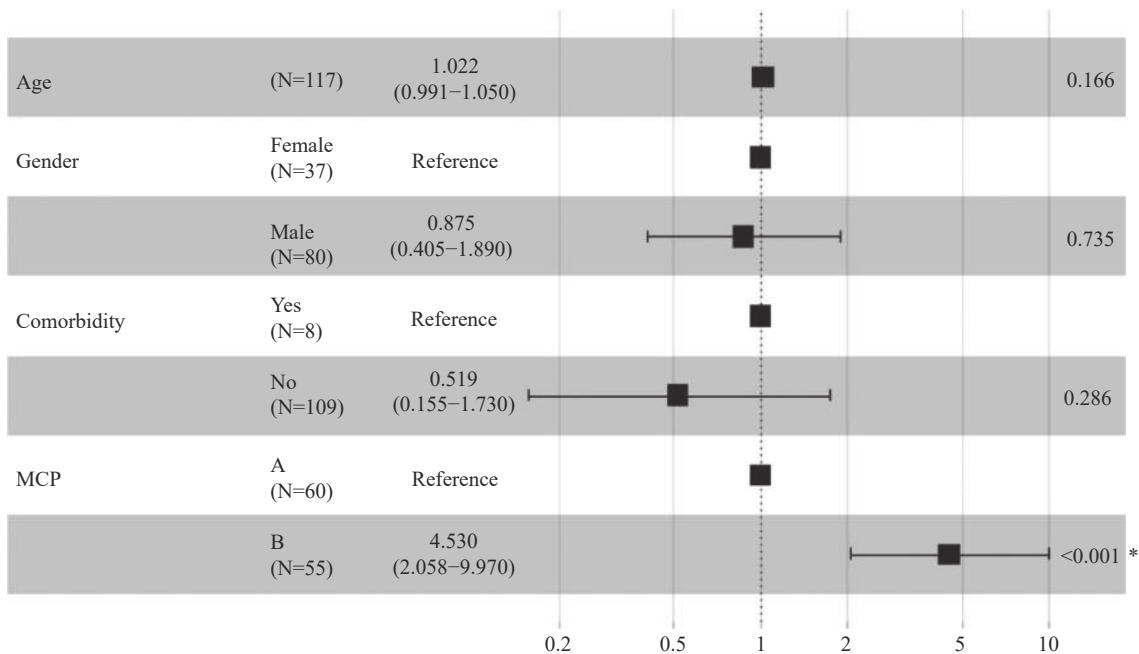


FIGURE 2. Associations between modified Child-Pugh (MCP) score level and escalated respiratory support. \*: The P value is statistically significant.

(31.45 g/L).

A total of 9 (25.7%) patients met the MCP-A criteria upon admission while 26 (74.3%) patients met the MCP-B criteria. Overall, 5 (55.6%) patients in the MCP-A group did not survive, which was higher than the 10 (38.5%) in the MCP-B that did not survive.

When analyzed using the mixed-effects Cox model, patients without liver disease comorbidities (adjusted HR: 0.128; 95% CI: 0.021–0.791;  $P=0.027$ ) and that were male (adjusted HR: 0.176; 95% CI: 0.052–0.595;  $P=0.005$ ) exhibited better survival probabilities (Figure 4).

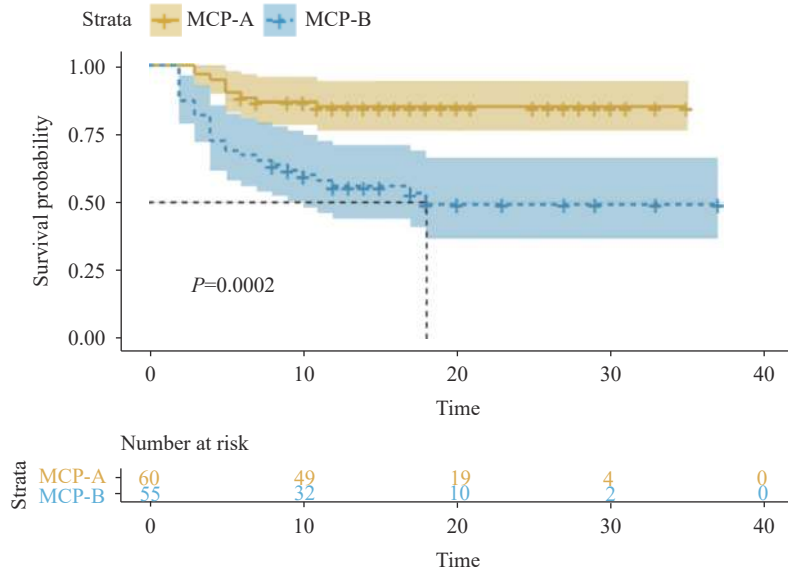


FIGURE 3. Liver dysfunctions based on modified Child-Pugh (MCP) score and escalation-free survival. Kaplan-Meier analysis of escalation-free survival in severe patients that were in need of extra oxygen support (3 points or above) within 30 days were plotted from the day of admission of every patient. Patients were stratified by which level they met the MCP score criteria. Predicted median survival is shown by the dashed line in the group with MCP-B level.

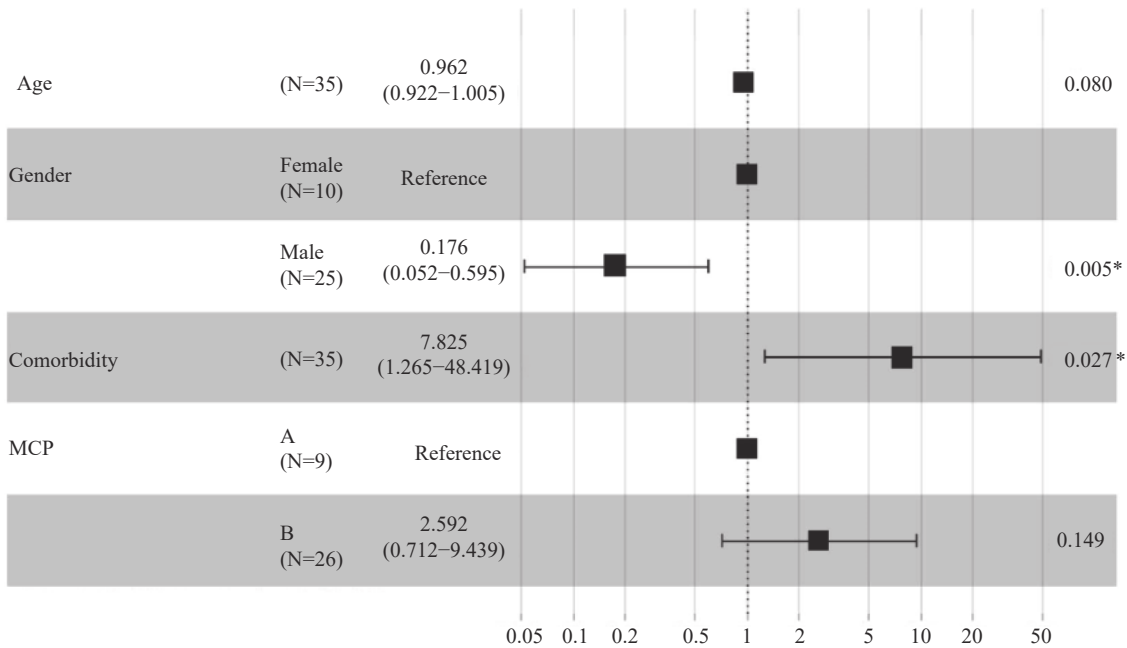


FIGURE 4. Associations between modified Child-Pugh (MCP) score level and mortality  
\*: The  $P$  value is statistically significant.

## DISCUSSION

In this study, many patients with liver dysfunctions could be stratified based on MCP, which was closely associated with escalation of respiratory support during hospitalization. In the severe group, 47.0% of patients met the MCP-B criteria with 47.3% of them being put on escalated respiratory support.

Among the escalated patients, 74.3% were MCP-B while 25.7% were MCP-A. Eventually, lower proportions (MCP-B: 38.5%; MCP-A: 55.6%) survived. The exact reason could not be established but might be correlated with the standard of care as well as liver and multiorgan dysfunction. Moreover, it could be that more care was emphasized on severe liver dysfunction patients. In addition, liver disease comorbidity is a risk factor for escalated patients.

The association between longitudinal laboratory outcomes and clinical outcomes was also determined. Notably, at admission, elevated AST levels were frequent and more significant than increased PT in escalated patients (9). In addition, patients that were eligible for escalation had relatively the same ALB and TBIL levels upon admission, but a contradictory change was found as disease progressed, compared to those who were not eligible for escalation. Eligible patients had low ALB levels and elevated TBIL levels (7).

This study was subject to some limitations. The main limitation of this study is that it is single-center study that does not represent diverse group patients. Another limitation was that we used the last values of laboratory results to impute missing data, which could be a potential source of bias. Each patient was prescribed antibiotics, antivirals, and corticosteroids during treatment. Our data could not show the effects of the drugs for liver damage; however, drug-related liver dysfunctions should be evaluated further.

The MCP was associated with escalated respiratory support in COVID-19 patients. Since elevated levels of liver injury indicators were strongly associated with escalation, the MCP criteria should be validated with multicenter, randomized cohorts and monitored during hospitalization.

**Acknowledgments:** All doctors in Wuhan Jinyintan Hospital.

**Conflicts of interest:** No conflicts of interest.

**Funding:** National Science and Technology Major Project (2018ZX10101001-005), China Academy of Chinese Medical Sciences Project (No. 2020YFC0841500).

doi: 10.46234/ccdcw2021.113

# Corresponding authors: Cheng Lu, lv\_cheng0816@163.com; Luqi Huang, hlq910@126.com.

<sup>1</sup> Institute of Basic Research in Clinical Medicine, China Academy of Chinese Medical Sciences, Beijing, China; <sup>2</sup> Dongzhimen Hospital, Beijing University of Chinese Medicine, Beijing, China; <sup>3</sup> Department of Infectious Diseases, Jinyintan Hospital, Wuhan, Hubei, China; <sup>4</sup> National Resource Center for Chinese Materia Medica, China Academy of Chinese Medical Sciences, Beijing, China.

Submitted: May 03, 2021; Accepted: May 10, 2021

## REFERENCES

- Piano S, Dalbeni A, Vettore E, Benfaremo D, Mattioli M, Gambino CG, et al. Abnormal liver function tests predict transfer to intensive care unit and death in COVID-19. *Liver Int* 2020;40(10):2394 – 406. <http://dx.doi.org/10.1111/liv.14565>.
- Cai QX, Huang DL, Yu H, Zhu ZB, Xia Z, Su YN, et al. COVID-19: abnormal liver function tests. *J Hepatol* 2020;73(3):566 – 74. <http://dx.doi.org/10.1016/j.jhep.2020.04.006>.
- Kambhampati S, Bauer KE, Bracci PM, Keenan BP, Behr SC, Gordan JD, et al. Nivolumab in patients with advanced hepatocellular carcinoma and child-pugh class B cirrhosis: safety and clinical outcomes in a retrospective case series. *Cancer* 2019;125(18):3234 – 41. <http://dx.doi.org/10.1002/cncr.32206>.
- Lei F, Liu YM, Zhou F, Qin JJ, Zhang P, Zhu LH, et al. Longitudinal association between markers of liver injury and mortality in COVID-19 in China. *Hepatology* 2020;72(2):389 – 98. <http://dx.doi.org/10.1002/hep.31301>.
- Mo PZ, Xing YY, Xiao Y, Deng LP, Zhao Q, Wang HL, et al. Clinical characteristics of refractory COVID-19 pneumonia in Wuhan, China. *Clin Infect Dis* 2020;ciaa270. <http://dx.doi.org/10.1093/cid/ciaa270>.
- Hundt MA, Deng YH, Ciarleglio MM, Nathanson MH, Lim JK. Abnormal liver tests in COVID-19: a retrospective observational cohort study of 1,827 patients in a major U.S. hospital network. *Hepatology* 2020;72(4):1169 – 76. <http://dx.doi.org/10.1002/hep.31487>.
- de Avelar CR, Pereira EM, de Farias Costa PR, de Jesus RP, de Oliveira LPM. Effect of silymarin on biochemical indicators in patients with liver disease: systematic review with meta-analysis. *World J Gastroenterol* 2017;23(27):5004 – 17. <http://dx.doi.org/10.3748/wjg.v23.i27.5004>.
- Xie KL, Chen CH, Tsai SP, Lu PJ, Wu H, Zeng Y, et al. Loss of life expectancy by 10 years or more from elevated aspartate aminotransferase: finding aspartate aminotransferase a better mortality predictor for all-cause and liver-related than alanine aminotransferase. *Am J Gastroenterol* 2019;114(9):1478 – 87. <http://dx.doi.org/10.14309/ajg.0000000000000332>.
- Chughlay MF, Akakpo S, Odedra A, Csermak-Renner K, Djeriou E, Winnips C, et al. Liver enzyme elevations in *Plasmodium falciparum* volunteer infection studies: findings and recommendations. *Am J Trop Med Hyg* 2020;103(1):378 – 93. <http://dx.doi.org/10.4269/ajtmh.19-0846>.
- National Health Commission of the People's Republic of China. Diagnosis and Treatment Protocol for COVID-19 (Trial Version 7). 2020. [http://en.nhc.gov.cn/2020-03/29/c\\_78469.htm](http://en.nhc.gov.cn/2020-03/29/c_78469.htm). [2021-3-2]
- Wang YM, Zhang DY, Du GH, Du RH, Zhao JP, Jin Y, et al. Remdesivir in adults with severe COVID-19: a randomised, double-blind, placebo-controlled, multicentre trial. *Lancet* 2020;395(10236):1569 – 78. [http://dx.doi.org/10.1016/s0140-6736\(20\)31022-9](http://dx.doi.org/10.1016/s0140-6736(20)31022-9).
- Hadid T, Kafri Z, Al-Katib A. Coagulation and anticoagulation in COVID-19. *Blood Rev* 2020;47:100761. <http://dx.doi.org/10.1016/j.blre.2020.100761>.

13. Iba T, Levy JH, Connors JM, Warkentin TE, Thachil J, Levi M. The unique characteristics of COVID-19 coagulopathy. *Crit Care* 2020;24(1):360. <http://dx.doi.org/10.1186/s13054-020-03077-0>.
14. Wu YY, Li HY, Guo XZ, Yoshida EM, Mendez-Sanchez N, Sandri GBL, et al. Incidence, risk factors, and prognosis of abnormal liver biochemical tests in COVID-19 patients: a systematic review and meta-analysis. *Hepatol Int* 2020;14(5):621 – 37. <http://dx.doi.org/10.1007/s12072-020-10074-6>.
15. Medetalibeyoglu A, Catma Y, Senkal N, Ormeci A, Cavus B, Kose M, et al. The effect of liver test abnormalities on the prognosis of COVID-19. *Ann Hepatol* 2020;19(6):614 – 21. <http://dx.doi.org/10.1016/j.aohp.2020.08.068>.
16. Zhang GM, Zhang GM, Hu S, Peng YF, Gu B. Is testing of aspartate aminotransferase necessary along with every alanine aminotransferase for health check in elderly individuals? *Clin Chim Acta* 2020;507:224 – 7. <http://dx.doi.org/10.1016/j.cca.2020.05.003>.

SUPPLEMENTARY TABLE S1. Clinical characteristics among patients with COVID-19 in the cohort.

Variables	All patients (N=298)	Mild group (N=186)	Severe group (N=112)	P
Age, years <sup>‡</sup>	60.00 (49.00, 68.00)	57.00 (46.00, 67.00)	63.00 (56.00, 70.00)	0.001
Gender (Female) <sup>†</sup>	132 (44.30%)	95 (51.10%)	37 (33.00%)	0.002
Signs and symptoms <sup>†</sup>				
Fever	92 (31.00%)	61 (33.00%)	31 (27.70%)	0.339
Cough	178 (60.10%)	111 (60.00%)	67 (60.40%)	0.951
Tachypnea	80 (26.90%)	42 (22.70%)	38 (33.90%)	0.035
Muscle soreness	2 (0.70%)	2 (1.10%)	0 (0.00%)	0.530
Headache	3 (1.00%)	3 (1.60%)	0 (0.00%)	0.294
Sore throat	4 (1.40%)	3 (1.60%)	1 (0.90%)	–
Chest pain	1 (0.30%)	1 (0.50%)	0 (0.00%)	–
Diarrhea	5 (1.70%)	3 (1.60%)	2 (1.80%)	>0.999
Nausea and vomiting	3 (1.00%)	2 (1.10%)	1 (0.90%)	>0.999
Comorbidity <sup>†</sup>				
Cardiovascular diseases	86 (28.90%)	48 (25.80%)	38 (33.90%)	0.134
Digestive system disease	32 (10.70%)	19 (10.20%)	13 (11.60%)	0.707
Endocrine system disease	42 (14.10%)	23 (12.40%)	19 (17.00%)	0.269
Malignant tumor	17 (5.70%)	11 (5.90%)	6 (5.40%)	0.841
Nervous system disease	6 (2.00%)	4 (2.20%)	2 (1.80%)	>0.999
Respiratory system disease	15 (5.00%)	8 (4.30%)	7 (6.20%)	0.456
Vital signs <sup>‡</sup>				
Body temperature, °C	36.70 (36.50, 37.20)	36.70 (36.50, 37.50)	36.60 (36.50, 37.00)	0.635
Heart rate, beats/min	88.00 (80.00, 98.75)	88.00 (80.00, 98.00)	88.00 (84.00, 99.00)	0.231
Respiratory rate, breaths/min	22.00 (20.00, 23.00)	22.00 (20.00, 23.00)	22.00 (20.00, 23.00)	0.088
Systolic blood pressure, mmHg	127.00 (116.00, 138.00)	125.00 (115.00, 136.00)	130.50 (120.00, 138.00)	0.013
Diastolic blood pressure, mmHg	80.00 (74.00, 88.75)	80.00 (73.25, 87.00)	81.50 (74.75, 91.25)	0.437
Laboratory results				
White blood cell count, ×10 <sup>9</sup> /L <sup>‡</sup>	5.52 (4.40, 7.50)	5.21 (4.16, 6.65)	6.44 (5.05, 8.99)	<0.001
Neutrophil cell count, ×10 <sup>9</sup> /L <sup>‡</sup>	3.77 (2.80, 5.62)	3.34 (2.49, 4.63)	5.10 (3.56, 7.48)	<0.001
Lymphocyte count, ×10 <sup>9</sup> /L <sup>‡</sup>	1.08 (0.81, 1.53)	1.24 (0.90, 1.65)	0.90 (0.60, 1.29)	<0.001
Immature granulocyte count <sup>‡</sup>	0.01 (0.01, 0.05)	0.01 (0.00, 0.03)	0.03 (0.01, 0.12)	<0.001
Eosinophils count, ×10 <sup>9</sup> /L <sup>‡</sup>	0.03 (0.00, 0.08)	0.03 (0.01, 0.09)	0.02 (0.00, 0.07)	0.167
Hemoglobin, g/L <sup>‡</sup>	126.00 (115.00, 136.00)	123.00 (113.00, 136.00)	128.00 (118.00, 136.00)	0.047
Platelet count, ×10 <sup>9</sup> /L <sup>‡</sup>	210.00 (161.00, 272.00)	207.00 (161.00, 271.00)	216.50 (161.75, 279.50)	0.637
IL-6, pg/mL <sup>‡</sup>	8.17 (6.41, 11.83)	7.59 (6.08, 10.95)	9.04 (7.01, 12.84)	0.003
Procalcitonin, pg/mL <sup>‡</sup>	0.04 (0.04, 0.05)	0.04 (0.04, 0.05)	0.04 (0.04, 0.09)	<0.001
Feritin, ng/mL <sup>‡</sup>	492.02 (252.32, 803.96)	383.04 (194.67, 630.86)	691.96 (450.20, 1,172.65)	<0.001
Erythrocyte sedimentation rate, mm/h <sup>‡</sup>	42.85 (25.00, 61.00)	37.00 (20.00, 54.00)	53.00 (31.00, 66.50)	<0.001
Amyloid A, mg/L <sup>‡</sup>	142.35 (11.00, 235.43)	54.45 (5.65, 219.48)	180.10 (79.60, 246.14)	<0.001
Fibrinogen, g/L <sup>‡</sup>	3.80 (2.80, 5.00)	3.60 (2.62, 4.40)	22.00 (20.00, 26.75)	<0.001
D-dimer level, mg/L <sup>‡</sup>	0.70 (0.39, 1.57)	0.51 (0.31, 1.03)	1.11 (0.57, 3.82)	<0.001
Prothrombin time, s <sup>‡</sup>	11.30 (10.70, 12.00)	11.20 (10.60, 11.75)	11.70 (10.83, 12.60)	<0.001



TABLE S1. (Continued)

Variables	All patients (N=298)	Mild group (N=186)	Severe group (N=112)	P
Prothrombin activity, % <sup>*</sup>	102.70 (89.00, 121.90)	108.10 (93.30, 124.30)	96.20 (77.95, 118.30)	<0.001
International normalized ratio <sup>*</sup>	0.97 (0.91, 1.02)	0.96 (0.90, 1.01)	0.99 (0.92, 1.06)	0.004
Activated partialthromboplastin time, s <sup>*</sup>	26.50 (23.30, 30.50)	25.95 (23.40, 29.70)	27.10 (23.20, 31.10)	0.508
Albumin, g/L <sup>§</sup>	33.14 (4.64)	34.76 (4.37)	30.45 (3.77)	<0.001
Aminotransferase alanine, U/L <sup>*</sup>	32.00 (20.00, 50.00)	28.50 (18.75, 45.00)	38.00 (23.00, 54.00)	0.005
Aminotransferase aspartate, U/L <sup>*</sup>	32.00 (24.00, 45.00)	29.00 (23.00, 41.00)	37.00 (29.00, 56.00)	<0.001
Total bilirubin, mmol/L <sup>*</sup>	12.85 (9.67, 16.50)	13.10 (9.70, 16.70)	12.00 (9.20, 16.15)	0.186
Indirect bilirubin, mmol/L <sup>*</sup>	8.35 (6.20, 11.43)	8.80 (6.80, 11.70)	7.80 (5.65, 10.70)	0.035
Direct bilirubin, mmol/L <sup>*</sup>	4.10 (3.00, 5.20)	4.00 (2.90, 5.12)	4.10 (3.20, 5.38)	0.440
Lactate dehydrogenase, U/L <sup>*</sup>	257.00 (197.50, 350.50)	225.00 (180.00, 277.00)	339.50 (261.00, 451.75)	<0.001
Alkaline phosphatase <sup>*</sup>	76.00 (60.00, 93.25)	76.00 (60.00, 94.00)	75.00 (60.00, 93.00)	0.984
Creatinine, µmol/L <sup>*</sup>	67.40 (57.00, 80.25)	66.50 (56.00, 78.00)	70.10 (59.00, 83.55)	0.039
Blood urea nitrogen, mmol/L <sup>*</sup>	4.40 (3.46, 5.43)	4.00 (3.30, 5.00)	4.90 (3.95, 6.55)	<0.001
Neutrophil to lymphocyte ratio <sup>*</sup>	5.5 (4.8, 6.3)	8.0 (6.6, 9.3)	3.7 (3.1, 4.3)	<0.001
CXR <sup>†,¶</sup>	297	186	111	
0	91 (30.63%)	74 (39.78%)	17 (15.32%)	<0.001
1	21 (7.11%)	19 (10.22%)	2 (1.80%)	0.227
2	185 (62.29%)	93 (50.00%)	92 (82.89%)	<0.001
Blood oxygen saturation <sup>†,¶</sup>	276	186	90	<0.001
2	186 (67.39%)	186 (100%)	0 (0%)	
3	4 (1.45%)	0 (0%)	4 (4.44%)	
4	78 (28.26%)	0 (0%)	78 (86.67%)	
5	8 (2.90%)	0 (0%)	8 (8.89%)	

Notes: P values were calculated by Pearson's chi-squared test or fisher's exact test for Count Data, and t test or Mann-Whitney test, as appropriate. P values denoted the comparison among mild group and severe group. Some P values were not given (denoted “-”) due to insufficient number of cases.

Abbreviations: CXR=Chest x-ray and chest computed tomography abnormality.

\*: median (interquartile range, IQR);

†: n/N (proportion, %);

§: mean (standard deviation, SD);

¶: due to missing values, number of patients are different from the overall number.

SUPPLEMENTARY TABLE S2. Baseline of liver function in patients who were eligible for escalation.

Variables	Total (N=117)	Escalation (N=35)	Mend (N=82)	P
Gender (female) <sup>†</sup>	37 (31.60%)	10 (28.60%)	27 (32.90%)	0.643
Age, years <sup>§</sup>	61.74 (12.48)	62.71 (12.58)	61.33 (12.49)	0.587
Comorbidity <sup>†</sup>	8 (6.80%)	3 (8.60%)	5 (6.10%)	0.694
Prothrombin time, s <sup>*</sup>	11.70 (10.80, 12.60)	11.70 (10.85, 12.75)	11.70 (10.80, 12.60)	0.711
Albumin, g/L <sup>*</sup>	30.30 (28.05, 32.92)	29.60 (28.20, 32.45)	30.30 (27.90, 33.20)	0.701
Aminotransferase aspartate, U/L <sup>*</sup>	37.50 (29.00, 56.00)	53.00 (38.00, 62.00)	33.00 (26.00, 49.00)	<0.001
Aminotransferase alanine, U/L <sup>*</sup>	38.50 (24.00, 55.00)	39.00 (25.50, 56.00)	38.00 (22.00, 53.00)	0.729
Total bilirubin, mmol/L <sup>*</sup>	12.05 (9.25, 16.07)	11.90 (9.85, 16.40)	12.10 (9.10, 15.60)	0.714
Modified Child-Pugh <sup>†,¶</sup>	115	35	80	<0.001
A	60 (52.17%)	9 (25.71%)	51 (63.75%)	
B	55 (47.83%)	26 (74.29%)	29 (36.25%)	
C	0 (0)	0 (0)	0 (0)	

Notes: *P* values were calculated by Pearson's chi-squared test or Fisher's exact test for Count Data, and *t* test or Mann-Whitney test, as appropriate. *P* values denoted the comparison among escalation group and mend group.

<sup>\*</sup>: median (interquartile range, IQR);

<sup>†</sup>: n/N (proportion, %);

<sup>§</sup>: mean (standard deviation, SD);

<sup>¶</sup>: due to missing values, number of patients are different from the overall number.

SUPPLEMENTARY TABLE S3. Baseline of liver function in patients who survived or not from the escalation.

Variables	Total (N=35)	Death (N=15)	Survived (N=20)	P
Gender (female) <sup>†</sup>	10 (28.60%)	3 (20.00%)	7 (35.00%)	0.643
Age, years <sup>§</sup>	61.74 (12.48)	62.71 (12.58)	61.33 (12.49)	0.587
Comorbidity <sup>†</sup>	3 (8.60%)	1 (6.70%)	2 (10.00%)	0.694
Prothrombin time, s <sup>*</sup>	11.70 (10.85, 12.75)	12.90 (11.70, 13.70)	11.25 (10.40, 12.05)	0.004
Albumin, g/L <sup>*</sup>	29.60 (28.20, 32.45)	28.60 (27.10, 29.95)	31.45 (29.10, 34.25)	0.002
Aminotransferase aspartate, U/L <sup>*</sup>	53.00 (38.00, 62.00)	54.00 (38.50, 57.00)	51.00 (38.00, 64.25)	0.894
Aminotransferase alanine, U/L <sup>*</sup>	39.00 (25.50, 56.00)	30.00 (22.50, 44.00)	47.00 (32.00, 58.75)	0.147
Total bilirubin, mmol/L <sup>§</sup>	13.59 (5.81)	15.69 (7.16)	12.02 (4.07)	0.089

Notes: *P* values were calculated by Pearson's Chi-squared test or Fisher's Exact test for Count Data, and *t* test or Mann-Whitney test, as appropriate. *P* values denoted the comparison among death group and survived group.

<sup>\*</sup>: median (interquartile range, IQR);

<sup>†</sup>: n/N (proportion, %);

<sup>§</sup>: mean (standard deviation, SD).