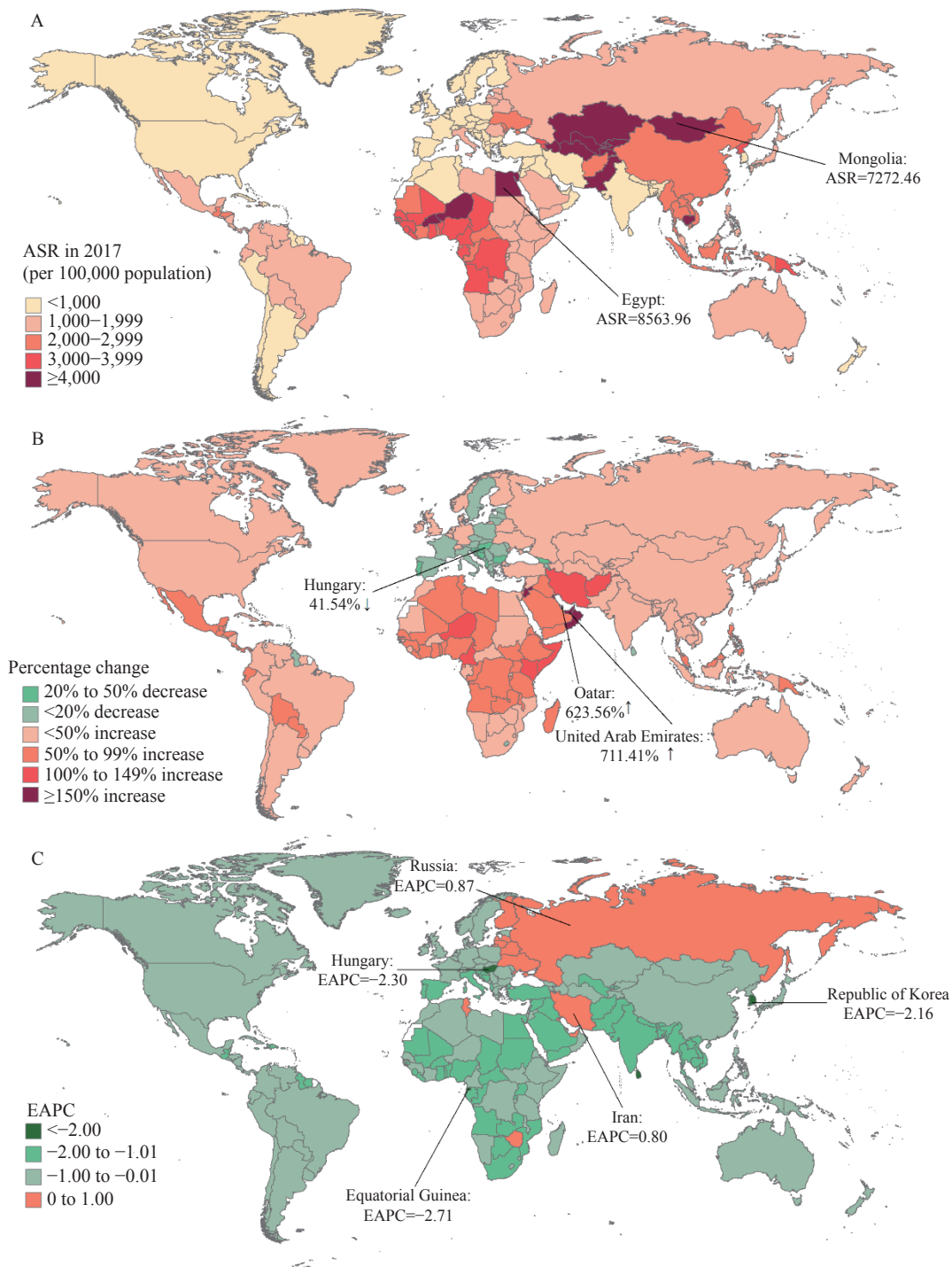
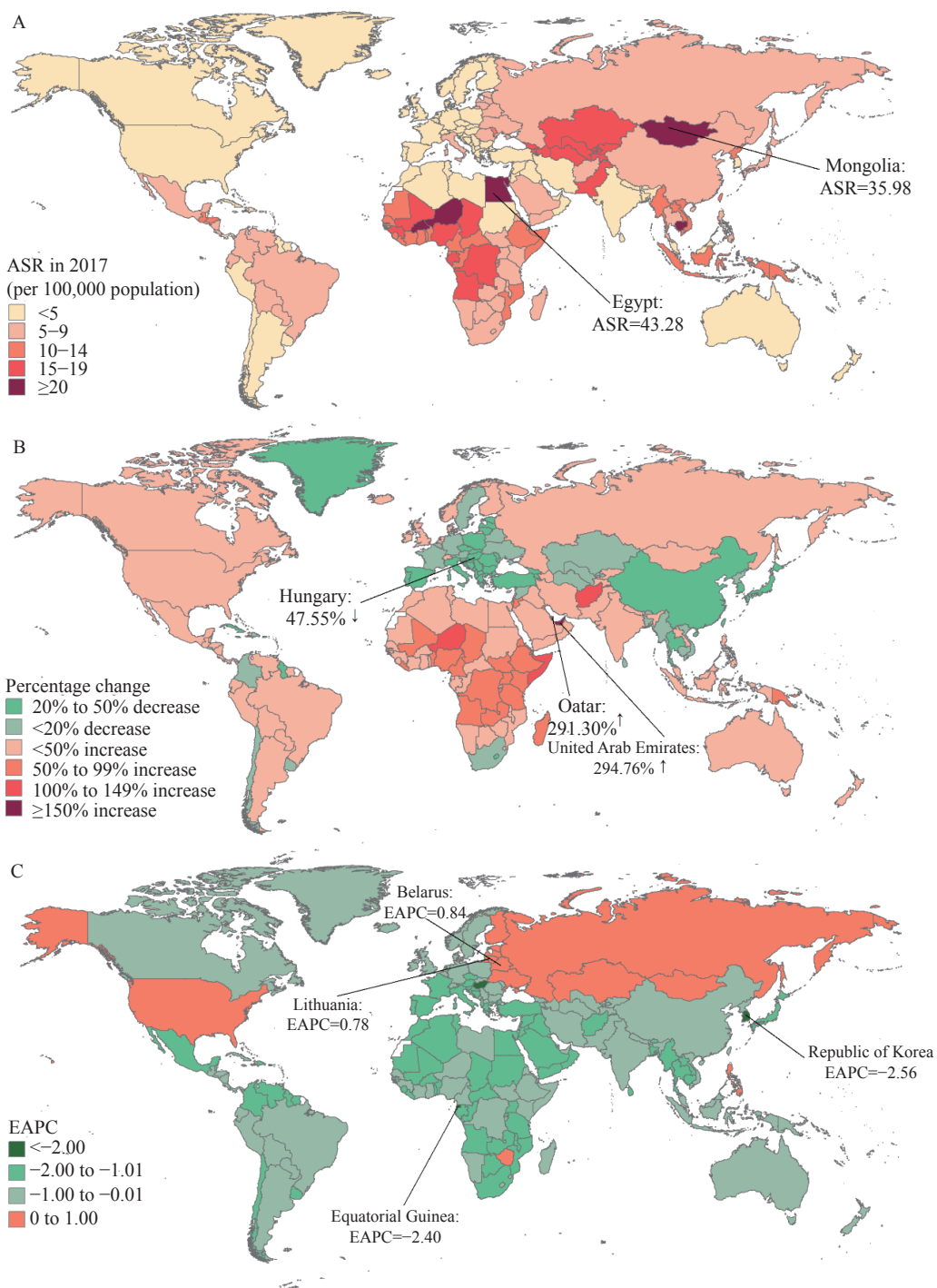


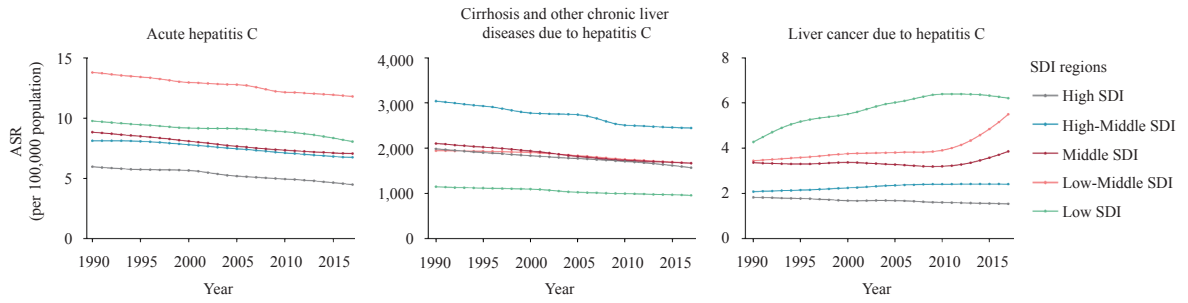
SUPPLEMENTARY FIGURE S1. The global burden of HCV infection by age group from 1990 to 2017, worldwide. (A) Total HCV cases. (B) Cirrhosis and other chronic liver diseases due to hepatitis C. (C) Acute hepatitis C. (D) Liver cancer due to hepatitis C.



SUPPLEMENTARY FIGURE S2. The global trends of cirrhosis and other chronic liver diseases due to hepatitis C in 195 countries and territories; (A) the age-standardized prevalence rate (ASR) of cirrhosis and other chronic liver diseases due to hepatitis C in 2017; (B) the percentage change in the number of cirrhosis and other chronic liver diseases due to hepatitis C between 1990 and 2017; (C) the estimated annual percentage changes (EAPCs) of age-standardized prevalence rate of cirrhosis and other chronic liver diseases due to hepatitis C from 1990 to 2017.



SUPPLEMENTARY FIGURE S3. The global trends of acute hepatitis C in 195 countries and territories; (A) the age-standardized prevalence rate (ASR) of acute hepatitis C in 2017; (B) the percentage change in acute hepatitis C cases between 1990 and 2017; (C) the estimated annual percentage changes (EAPCs) of acute hepatitis C age-standardized prevalence rate from 1990 to 2017.



SUPPLEMENTARY FIGURE S4. The age-standardized prevalence rate (ASR) of acute hepatitis C, cirrhosis and other chronic liver diseases due to hepatitis C, and liver cancer due to hepatitis C from 1990 to 2017, by Socio-demographic Index (SDI) region.